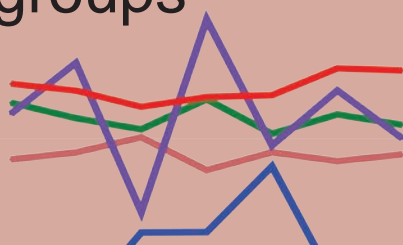




# manual of comparison groups



composition and use of the  
comparison scores for the  
MATE 2.1 and the MATE-Y 2.1

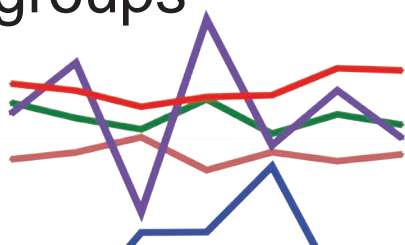
---

theo broekman  
gerard schippers





# manual of comparison groups



composition and use of the  
comparison scores for the  
MATE 2.1 and the MATE-Y 2.1

---

theo broekman  
gerard schippers

## **MATE: Measurements in the Addictions for Triage and Evaluation**

<http://www.mateinfo.eu>

### **Reference**

Broekman, T. G. & Schippers, G. M. (2018). MATE Manual of comparison groups. Composition and use of the comparison scores for the MATE 2.1 and the MATE-Y 2.1. Nijmegen: Bêta Boeken.

### **Affiliations**

Theo G. Broekman, MSc  
Bureau Bêta, Nijmegen, the Netherlands

Gerard M. Schippers, PhD  
Academic Medical Centre, University of Amsterdam, the Netherlands

### **Publisher**

Bureau Bêta, Nijmegen, The Netherlands..  
<http://www.beta.nl>

# Contents

<b>v</b>	<b>Preface</b>
<b>1</b>	<b>Composition and use of the comparison scores</b>
<b>5</b>	<b>The comparison groups as profiles of standardized scores</b>
6	MATE comparison profiles in separate graphs
7	MATE comparison profiles in one graph
8	MATE-Y comparison profiles in separate graphs
9	MATE-Y comparison profiles in one graph
<b>11</b>	<b>The comparison groups</b>
12	MATE Comparison group Alcohol
14	MATE Comparison group Cannabis
16	MATE Comparison group Opiates
18	MATE Comparison group Stimulants
20	MATE Comparison group Gambling
22	MATE-Y Comparison group Alcohol
24	MATE-Y Comparison group Cannabis
26	MATE-Y Comparison group Stimulants
28	MATE-Y Comparison group Behavioral addictions
<b>31</b>	<b>Example cases</b>
33	MATE Comparison group Alcohol
37	MATE Comparison group Cannabis
41	MATE Comparison group Opiates
45	MATE Comparison group Stimulants
49	MATE Comparison group Gambling



## Preface

---

The MATE Manual of comparison groups was written to facilitate clinicians' use of the MATE (Measurement in the Addictions for Triage and Evaluation). The MATE was developed because a set of instruments was needed for assessing the characteristics of persons with an addiction disorder. Both the MATE and the MATE-Y (MATE-Youth) provide 20 different summary scores and a substantial number of item scores. Interpretation and use of the scores for assigning patients to treatment (triage) and for treatment evaluation are enhanced when individuals' scores can be compared with the scores of other people. Thus, comparison groups are needed which would allow these comparisons to be made.

For years, the MATE and the MATE-Y have been used as the standard intake assessment instruments in the majority of the Dutch substance abuse treatment centres. This made it possible to create a database of a large sample of addiction treatment seekers in the Netherlands. Subsidized by the Dutch national addiction expertise centre, a project was executed by Bureau Bêta in Nijmegen to create such a database and to gather comparison data for a variety of treatment seekers.

Although the sample comprises substance users living in the Netherlands, we believe that the data can also be helpful to clinicians who are using the MATE in other countries. When data become available in other countries, we intend to incorporate them into the analyses.

We believe that the MATE Manual of comparison groups will enhance the quality of treatment for substance-related and addictive disorders.

Theo G. Broekman  
Gerard M. Schippers

Nijmegen, The Netherlands  
June 2018





## Composition and use of the comparison scores

---

### Introduction

The MATE provides 20 different MATE scores and a large number of item scores. For interpreting and using an individual's scores, it is helpful to compare them with those of other people. For example, to consider a person's score as low, medium, or high on a certain characteristic depends not only on the particular measure that is being used, but also on how other people score on that characteristic. Comparing an individual's scores with those of other people will provide a more complete picture of how the person is functioning. This information, in turn, can be used to devise a treatment plan for the individual and to evaluate his or her progress through treatment. A combination of the MATE scores can, moreover, be used to construct a profile for each person.

In principle, the scores of an individual who is seeking treatment can be compared with the scores of people in general. Suppose, for example, we knew the way normal people scored on the MATE. We could then refer to normal scores, and we could assess whether and to what extent a particular person deviates from the norm. Norms like this are, however, not yet available. One could even question whether they would provide much additional insight into how the person is functioning. It would seem more useful to compare the scores of a treatment-seeking person with those of other treatment seekers. We, therefore, do not use normal scores, but comparison scores. To develop the comparison scores, we created a database from a large sample of addiction-treatment seekers. Their scores are presented here in a series of tables.

First, we describe (1) how the data were gathered and compiled into a data file; (2) how comparison groups were constructed; (3) how the comparison tables were organized; and (4) how comparison scores can be used. Finally, (5) as exemplars, the profiles of a variety of persons are presented.

### The MATE and MATE-Y datasets

Data were gathered in three large regional substance abuse treatment centres in the Netherlands. Two of them mainly serve provincial and suburban areas, but one of them includes a large city. Together, their catchment areas include about 20% of the country. The data were collected from 2010 through 2015, with the exception of one centre, which adopted the MATE in 2012. In total, the three centres obtained 40,892 records (44.6%, 37.1%, and 18.2%, respectively). Among these, 2,585 cases (8.7%) had more than 50% missing data and were excluded. The remaining 37,307 MATEs include 31,186 unique individuals. Among these MATEs, only the most complete ones were included, or in the case of equally complete ones, only the first assessment was included. In summary, this procedure resulted in a dataset that included 31,186 different MATE assessments.

Two of the centres made their MATE-Y data available to us. These assessments were made from 2013 through 2016. In total, 2,916 records were completed (27.8% and 72.2%, respectively, from the two centres). Among these, 407 (14%) had more than 50% missing data and were excluded. The remaining 2,388 MATE-Ys include 2,258 unique individuals. Among them, only the most complete assessment was included, or in the case of equally complete ones, only the first MATE-Y assessment was included. In summary, this procedure resulted in a dataset with 2,258 different MATE-Y assessments.

### Representativeness

The MATE dataset includes data from only a few of the Dutch treatment centres. Thus, one might ask whether the sample is representative of the population of Dutch substance abusers who are seeking treatment. To determine this, we compared our dataset with that of the National Alcohol and Drugs Information System (LADIS; <http://www.ladis.eu/en>). The LADIS database contains basic information on all persons (about 60,000 annually) who are registered in any of the Dutch Substance Abuse Treatment Centres. In both the LADIS and our dataset, we noted the distributions of the different kinds of primary substance use or behavioural problems (PPS) and patients' age and their sex.

The distribution of the kinds of PPSs in the MATE dataset is equivalent to that in the LADIS dataset (from 2015 onward); see Table 1.

Table 1. Comparison (in percentages) of the most common kinds of PPSs in the MATE (2015) and the LADIS (2015) datasets

Primary-problem substance/ behaviour	MATE dataset	LADIS 2015
Alcohol	48.6	45
Cannabis	19.9	17
Opioids	4.3	14
Stimulants	16.4	14
Gambling	5.1	3

Only in the percentage of people with problems with opioids is there a discrepancy between the two percentages. The reason seems to be that there was a lower influx of newly admitting people with problems with opioids. The MATE database contains only persons newly admitted during the period under observation. In the LADIS dataset, many of the people with problems with opioids who were included had a much longer treatment history.

Patients' age and sex are equivalent in the two datasets. In the MATE dataset, 22.9% of the cases were female; in the LADIS dataset females comprised approximately 25% of the cases. Patients in the MATE dataset are somewhat younger than those in the LADIS dataset (38.8 vs. 41.6 years). This small difference is probably due to the larger number of persons with chronic opioid problems who were registered in the LADIS dataset and who were somewhat older. In general, the sample of patients in the MATE dataset seems quite representative of the population of Dutch treatment seekers as a whole. Nevertheless, when using the MATE dataset to compare the characteristics of people with opioids as their PPS, one should take into consideration the fact that they are somewhat biased towards people who were recently admitted.

There are no national data available to evaluate the representativeness of treatment seekers younger than 20 who are included in the MATE-Y dataset.

### Composition of the comparison groups

The comparison groups were stratified according to relevant patient characteristics. Relevance was evaluated on the basis of (a) assumed practical clinical relevance, (b) a sufficiently high prevalence in the categories, (c) a sufficient number of persons in the subgroups, and (d) sufficient variance in the MATE scores in the subgroups. Based on these considerations, we first identified the classes of PPSs and then divided the MATE dataset into five comparison groups: Alcohol, Cannabis, Opioids, Stimulants, and Gambling, and the MATE-Y dataset into four comparison groups: Alcohol, Cannabis, Stimulants, and Behavioural Addictions.

The relevance of comparing patients according to their PPS is indicated when we inspect the means on the 20 standardized MATE scores in the five comparison groups. These are showed in the profiles of the standardized scores, which are shown on pages 6 and 7. Patients with alcohol misuse as their PPS have, on average, high MATE scores. Patients with stimulants as their PPS are highest on many of the MATE scores, whereas those with gambling as their PPS are lowest of the groups on almost all of the MATE scores.

As a next step, we investigated whether it would be useful to distinguish the subgroups according to their age and sex. We assumed that this would be useful when there was a sizable correlation between the MATE scores and the age and sex of patients in the comparison groups. Accordingly, when the MATE scores were correlated .20 or higher with age, or sex, or both, we conducted further analyses to determine whether splitting the group into two subgroups would lead to significant differences between the subgroups. For age, there were ten correlations that were larger than .20. For sex, there was only one correlation larger than .20; in the group who used stimulants, variable S5.1 was correlated .21 with sex. In these cases, we computed the difference scores for the subgroups that were above and below the median age, and for the male and female subgroups. Because in all cases the differences were negligible, we decided not to include subgroup scores in the comparison tables. In addition, because many of the subscales have a limited range, we also wanted to avoid incorrectly assumed precision.

For the MATE-Y, the amount of available data was insufficient to make comparisons between subgroups.

## Comparison scores

### MATE scores

There are a variety of kinds of scores that one could choose to make comparisons among the MATE scores. These include rank-order scores (percentiles or deciles) and various kinds of normalized standard scores (for example, T-scores). All of them have the disadvantage of being very finely divided. Using such scales would require uncertainty intervals, which we cannot reliably compute. Again, these scales would require greater precision than the data allow. We, therefore, chose a somewhat more cruder comparison scale for the MATE scores, we computed comparison scores based on the 25th, 50th, 70th, 80th, and 90th percentiles. This uneven distribution was chosen to enhance differentiation at the higher end of the scale, which for almost all of the scales is the more problematic end. This differentiation resulted in the following six intervals: 0-25th, 25-50th, 50-70th, 70-80th, 80-90th, and 90-100th. We characterized the MATE scores falling within these intervals as: Low, Medium, Above the Mean, Well Above the Mean, High, and Very High. To facilitate ease of interpretation of the scores, the six categories can also be described as: In the 25% who scored lowest, 75% Achieved this score or a higher one, 50% Achieved this score or a higher one, 30% Achieved this score or a higher one, 20% achieved this score or a higher one, In the 10% who scored highest.

Using this categorization, tables that included comparison scores for the MATE scores and the MATE-Y scores were constructed for each of the five MATE and the four MATE Y comparison groups.

### Scores on Individual Items

For the MATE scores that were selected, comparison scores are also presented for the individual items. These five MATE scores are included: *Characteristics of physical comorbidity* [S2.1], *Characteristics of physical comorbidity* [S2.2], *Characteristics of psychiatric comorbidity* [S2.3], *Limitations - Total* [S7.1], *Limitations - Basic* [S7.2]. Furthermore, under the heading *Limitations-miscellaneous*, comparison scores are also presented for the six items from the MATE-ICN Module 7 that are not part of the MATE scores for Module 7.

For the three MATE scores *Characteristics of physical comorbidity* [S2.1], *Characteristics of physical comorbidity* [S2.2], and *Characteristics of psychiatric comorbidity* [S2.3], percentages are presented of the number of people that endorsed each of the four, two, and four items, respectively, on which these three MATE scores are based. For the two MATE scores *Limitations - Relationships* [S7.3] and *Limitations - Basic* [S7.2] and for the category *Limitations - miscellaneous*, the percentages are presented of the number of people in the comparison groups that score categories: None, Mild, Moderate, Severe, or Complete in the MATE-ICN Module 7. All percentages in the comparison groups are presented in the tables on page 12 and following.

## Using the comparison scores

The tables with the comparison scores can be used to justify where treatment is indicated. For example, among patients with an alcohol problem, one could consider that a score of 3 or 4 on *Limitations in Intimate Relationships* (d770) is seen in 25% of the cases, whereas such high scores on *Problems in Formal Relationships* (d740) are seen in only 8% of the cases (page 13). A high score on Intimate Relationships can, therefore, be seen as representing a less urgent need than a high score on Formal Relationships. Comparison scores can also be helpful in evaluating treatment outcome. The extent of changes in treatment that patients have made can, for example, be measured by conducting a follow-up assessment with the MATE Outcomes. The scores obtained can, in turn, be interpreted in terms of the comparison scores. For example, among patients in the Stimulants subgroup, a change from a MATE score of 6 to a MATE score of 3 on the *Limitations - Relationships* [S7.3] scale would represent a shift from Above the Mean to At the Mean, but the same degree of change on *Positive external influences* [S8.1] would mean a far larger shift: from being Well Above the Mean to being Low, even though the range of scores on both scales is from 0 to 20. It should also be noted that the scores of a particular individual can be interpreted in terms of the scores of others in the comparison groups. Thus, not only the absolute value of a score is important, but also its value relative to the scores of others. Triagists and other treatment professionals are, of course, free to use the comparison scores that they deem to be most appropriate.

For persons with a PPS other than those included in the tables that are presented, one might ask which comparison scores would be best to use and which comparison groups would be most appropriate for a particular person. These questions can be answered by referring to the profiles of the

comparison groups. They are explained in the paragraph on page 6 and the following pages, which discusses the comparison scores as profiles of standardized scores.

Comparison scores are also suitable for constructing profiles of individuals, which would allow the status of the person to be presented as a short overview. To exemplify this, we constructed a series of these profiles, which are explained in the paragraph on example cases on page 31.

---

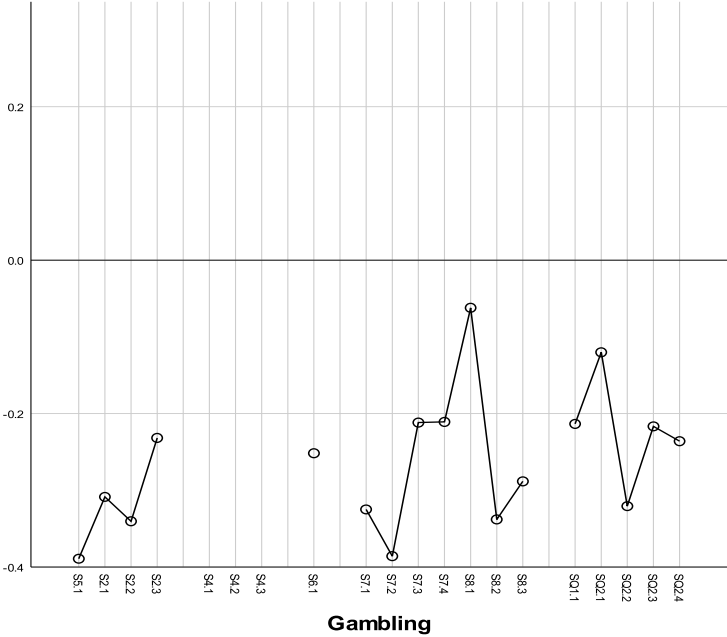
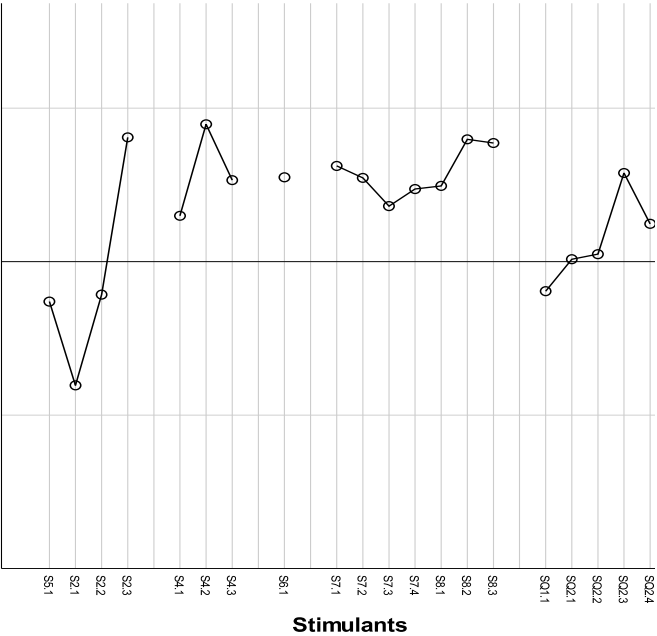
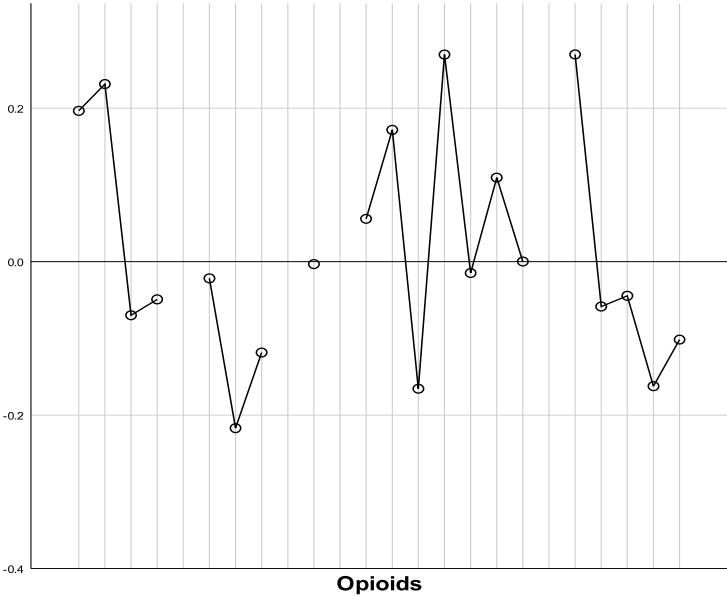
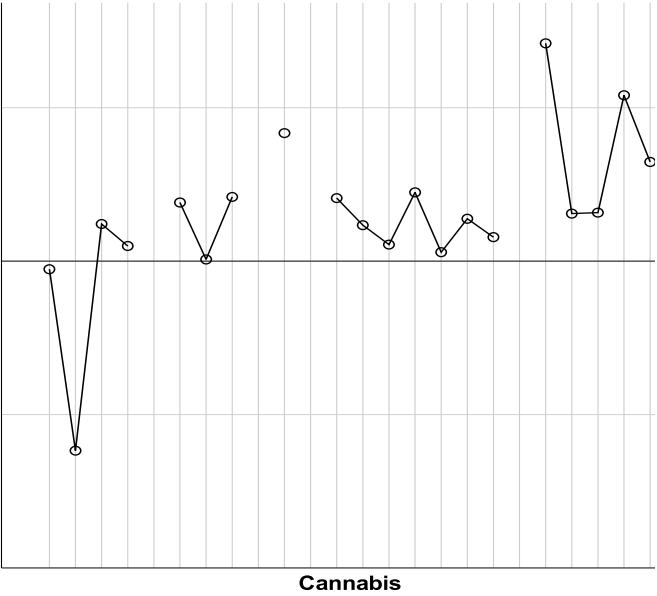
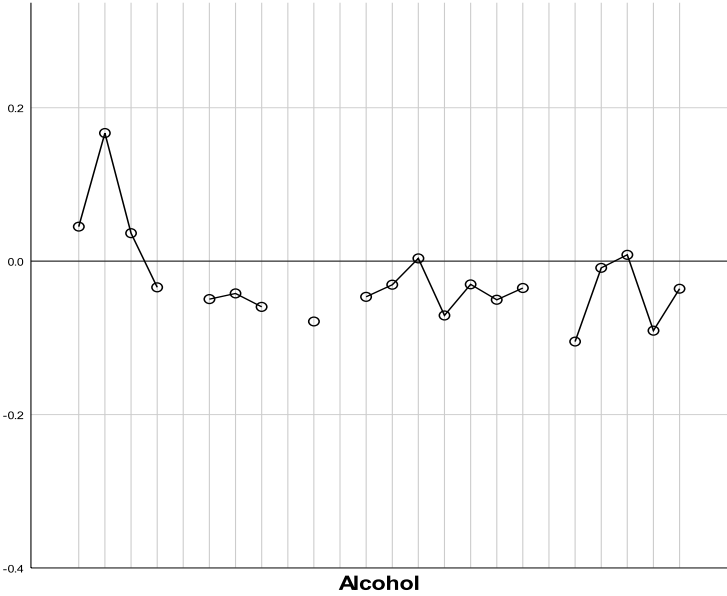
## The comparison groups as profiles of standardized scores

---

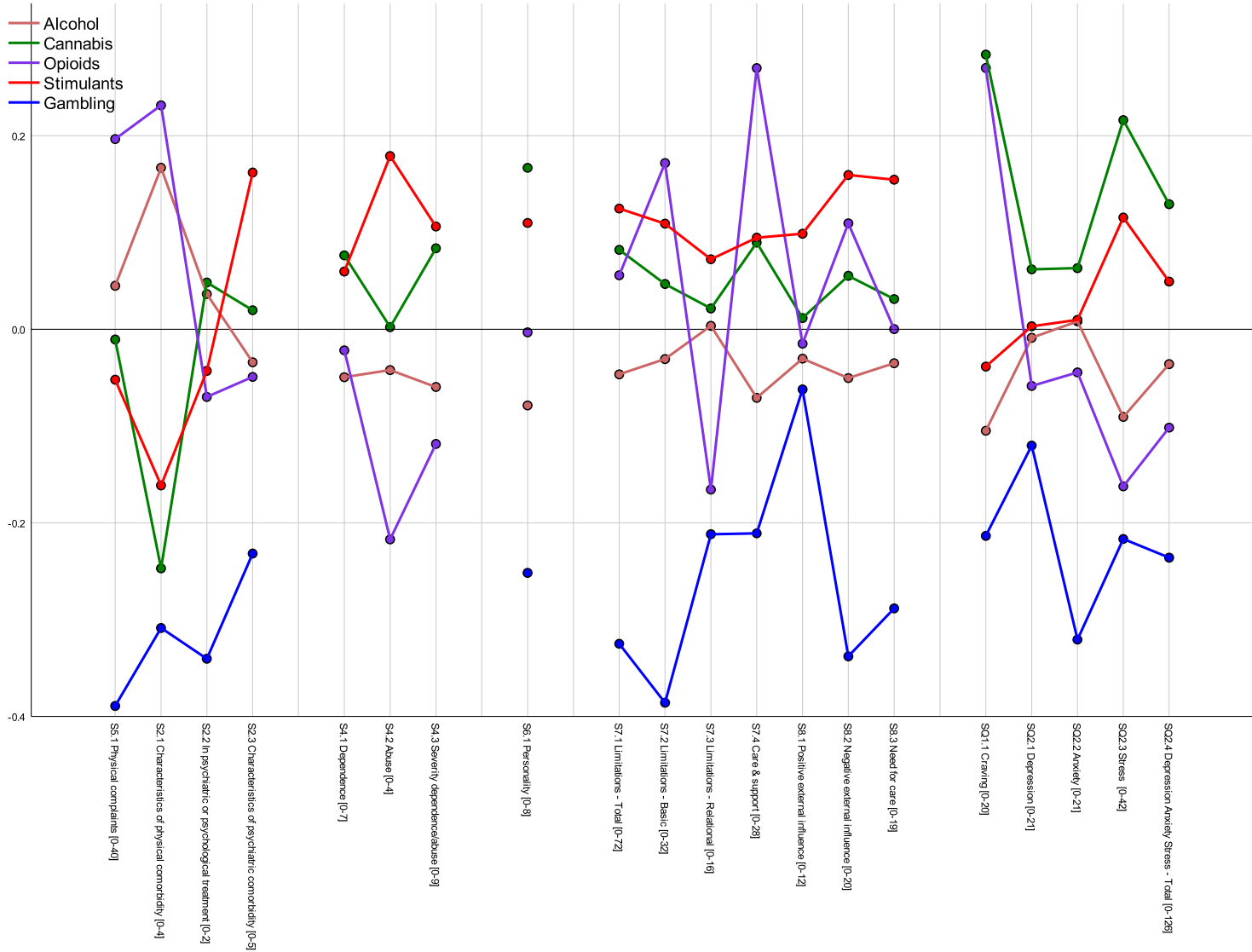
In order to present profiles of the comparison groups for the MATE and the MATE-Y on one scale, the 20 MATE scores are transformed into standard scores (z-scores). The graphs contain the means of the standardized MATE scores for each comparison group. The profiles are presented on the following pages. For the MATE and the MATE-Y, each comparison group is presented on the first page in a separate graph, and on the next page these graphs are combined into one.

The graphs facilitate comparisons between the comparison groups. When it is unclear which comparison group best matches a particular person, the graphs can be used to identify which fits best.

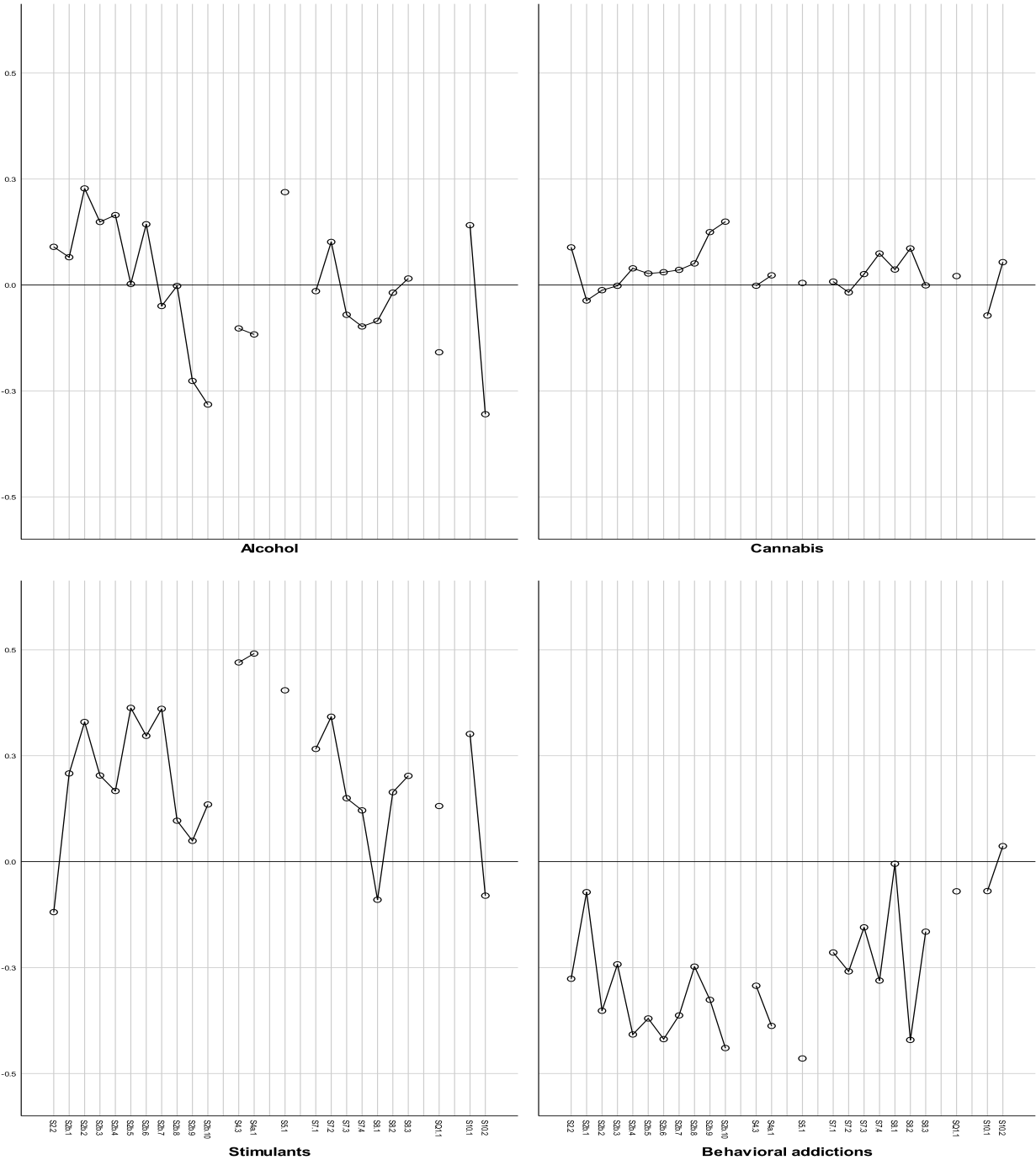
MATE comparison profiles in separate graphs



MATE comparison profiles in one graph

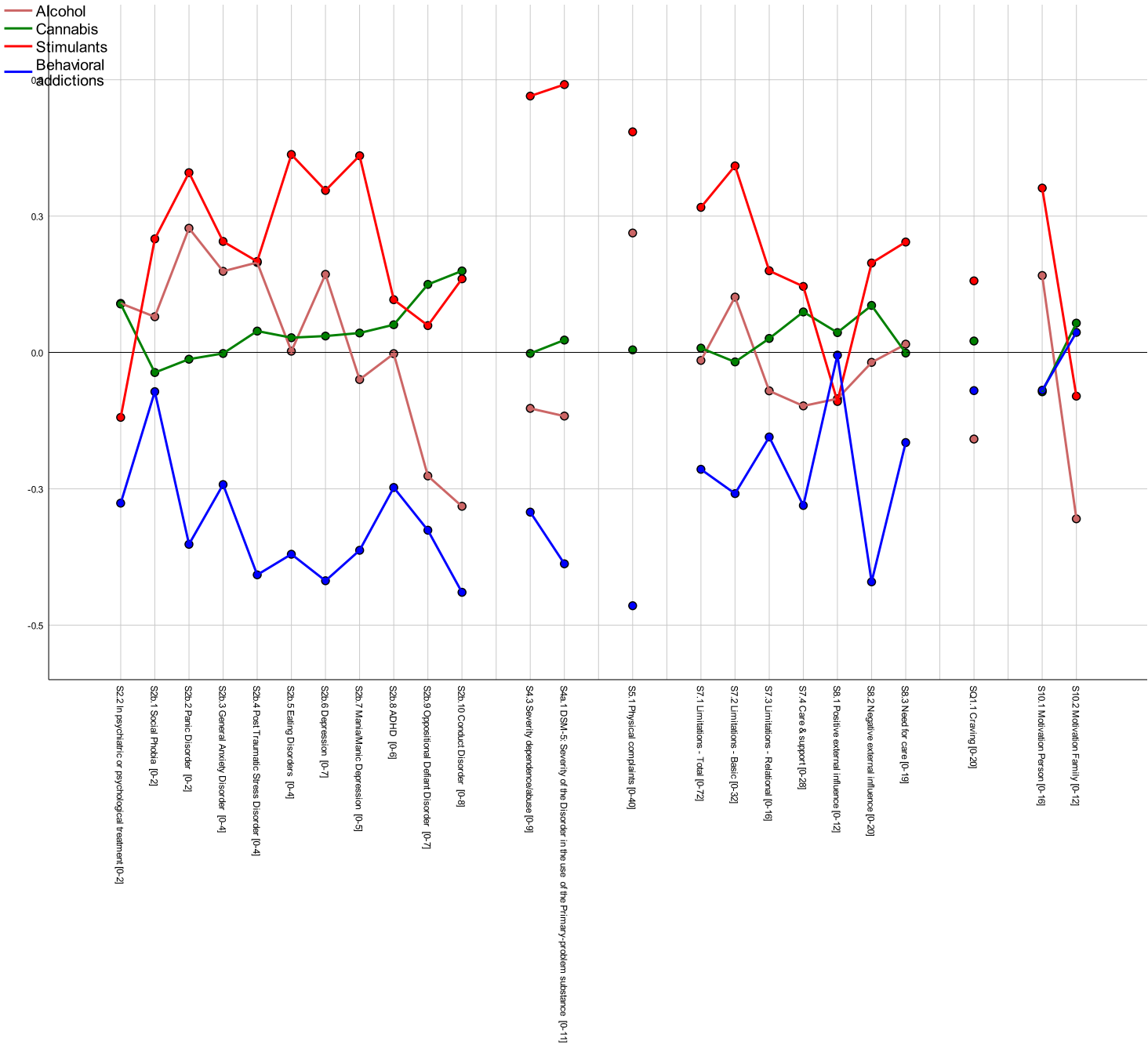


MATE-Y comparison profiles in separate graphs





MATE-Y comparison profiles in one graph





**The comparison groups**

---

## MATE Comparison group Alcohol

n ≈ 14813

Male 73%

Age (M, Sd, Range) 45 13 13-91

MATE-scores	Description		In the 25% who scored lowest	75% achieved this score or a higher one	50% achieved this score or a higher one	30% achieved this score or a higher one	20% achieved this score or a higher one	In the 10% who scored highest
	Interval		25	25	20	10	10	10
	Percentile		25	50	70	80	90	100
	Mean	Median	Low	Medium	Above the Mean	Well above the Mean	High	Very High
S2.1 Characteristics of physical comorbidity [0-4]	0.51	0	0		1		2	3-4
S2.2 In psychiatric or psychological treatment [0-2]	0.75	1	0	1		2		
S2.3 Characteristics of psychiatric comorbidity [0-5]	0.46	0	0			1	2	3-5
S4.1 Dependence [0-7]	4.52	5	0-3	4-5	6		7	
S4.2 Abuse [0-4]	2.08	2	0-1	2	3		4	
S4.3 Severity dependence/abuse [0-9]	5.77	6	0-4	5-6	7	8	9	
S5.1 Physical complaints [0-40]	11.39	10	0-5	6-10	11-15	16-18	19-22	23-40
S6.1 Personality [0-8]	3.21	3	0-2	3	4	5	6	7-8
S7.1 Limitations - Total [0-76]	14.62	13	0-7	8-13	14-19	20-23	24-28	29-76
S7.2 Limitations - Basic [0-32]	4.35	3	0-1	2-3	4-6	7-8	9-11	12-32
S7.3 Limitations - Relational [0-20]	4.12	3	0-2	3	4-5	6-7	8-9	10-20
S7.4 Care & support [0-32]	3.37	2	0	1-2	3-4	5-6	7-9	10-32
S8.1 Positive external influence [0-12]	3.68	3	0-2	3	4-5	6		7-12
S8.2 Negative external influence [0-20]	3.24	3	0-1	2-3	4	5-6	7	8-20
S8.3 Need for care [0-20]	4.08	3	0-1	2-3	4-5	6-7	8-9	10-20
SQ1.1 Craving [0-20]	7.35	7	0-4	5-7	8-9	10-11	12-15	16-20
SQ2.1 Depression [0-42]	13.86	12	0-4	5-12	13-20	21-26	27-32	33-42
SQ2.2 Anxiety [0-42]	9.61	7	0-2	3-7	8-12	13-18	19-24	25-42
SQ2.3 Stress [0-42]	14.42	12	0-6	7-12	13-20	21-24	25-30	31-42
SQ2.4 Depression Anxiety Stress - Total [0-126]	37.88	32	0-14	15-32	33-52	53-64	65-80	81-126

S2.1 Characteristics of physical comorbidity [0-4]	% Prevalence				
Physical (un)health	17%				
Intoxication/ withdrawal symptoms	16%				
Physical disease	17%				
Pregnancy	0%				
S2.2 In psychiatric or psychological treatment [0-2]	% Prevalence				
Medication prescribed for for psychological or psychiatric problems	40%				
Current or within the past year psychiatric or psychological treatment	35%				
S2.3 Characteristics of psychiatric comorbidity [0-5]	% Prevalence				
Suicide risk. Plan, attempt	7%				
Psychotic symptoms. Hallucinations	8%				
Psychotic symptoms. Delusions	13%				
Confusion	12%				
S7.3 Limitations - Relational [0-20]	0 None	1 Mild	2 Moderate	3 Severe	4 Complete
d770 intimate relationships	41%	14%	20%	20%	5%
d7600 parent-child relationships	67%	9%	11%	10%	4%
d750,d760 informal social relationships and family relationships	56%	14%	16%	11%	3%
d740 formal relationships	76%	9%	9%	5%	1%
d710-d729 General interpersonal interactions	66%	12%	14%	7%	1%
S7.2 Limitations - Basic [0-32]	0 None	1 Mild	2 Moderate	3 Severe	4 Complete
d610 Acquiring and maintaining a place to live	82%	5%	4%	5%	4%
d620-d640 Household tasks	65%	12%	13%	8%	2%
d510,d520,d540 Self-care	82%	9%	7%	2%	1%
d5700 Ensuring one's physical comfort	95%	3%	1%	1%	1%
d5701 Managing diet and fitness	59%	13%	16%	10%	2%
d5702a Seeking and following advices and treatment by healthcare	69%	14%	11%	5%	1%
d5702b Protecting oneself from health risks due to risky behaviour	76%	11%	8%	4%	1%
d230 Carrying out daily routine	53%	13%	18%	13%	3%
Beperking - overige items	0 None	1 Mild	2 Moderate	3 Severe	4 Complete
d810-d859 Education, work, and employment	49%	10%	14%	17%	10%
d870 Economic self-sufficiency	60%	11%	12%	12%	5%
d920 Recreation and leisure	45%	13%	19%	18%	5%
d930 Religion and spirituality	93%	4%	2%	1%	0%
d240 Handling stress and other psychological demands	23%	13%	25%	32%	8%
d1 Learning and applying knowledge	63%	15%	14%	7%	1%

## MATE Comparison group Cannabis

n ≈ 6063

Male 81%

Age (M, Sd, Range) 28 9 13-66

MATE-scores	Description		In the 25% who scored lowest	75% achieved this score or a higher one	50% achieved this score or a higher one	30% achieved this score or a higher one	20% achieved this score or a higher one	In the 10% who scored highest
	Interval		25	25	20	10	10	10
	Percentile		25	50	70	80	90	100
	Mean	Median	Low	Medium	Above the Mean	Well above the Mean	High	Very High
S2.1 Characteristics of physical comorbidity [0-4]	0.22	0	0				1	2-4
S2.2 In psychiatric or psychological treatment [0-2]	0.76	1	0	1		2		
S2.3 Characteristics of psychiatric comorbidity [0-5]	0.51	0	0		1		2	3-5
S4.1 Dependence [0-7]	4.76	5	0-4	5	6		7	
S4.2 Abuse [0-4]	2.13	2	0-1	2	3			4
S4.3 Severity dependence/abuse [0-9]	6.11	7	0-5	6-7	8		9	
S5.1 Physical complaints [0-40]	10.96	10	0-5	6-10	11-15	16-17	18-21	22-40
S6.1 Personality [0-8]	3.66	4	0-2	3-4	5		6	7-8
S7.1 Limitations - Total [0-76]	15.90	15	0-9	10-15	16-20	21-24	25-29	30-76
S7.2 Limitations - Basic [0-32]	4.69	4	0-2	3-4	5-6	7-8	9-10	11-32
S7.3 Limitations - Relational [0-20]	4.18	4	0-2	3-4	5-6	7	8-9	10-20
S7.4 Care & support [0-32]	4.10	3	0	1-3	4-5	6-8	9-11	12-32
S8.1 Positive external influence [0-12]	3.77	3	0-2	3	4-5	6	7	8-12
S8.2 Negative external influence [0-20]	3.56	3	0-1	2-3	4-5	6	7-8	9-20
S8.3 Need for care [0-20]	4.32	4	0-1	2-4	5-6	7	8-9	10-20
SQ1.1 Craving [0-20]	9.28	9	0-6	7-9	10-12	13-14	15-16	17-20
SQ2.1 Depression [0-42]	14.69	12	0-4	5-12	13-20	21-26	27-32	33-42
SQ2.2 Anxiety [0-42]	10.11	8	0-4	5-8	9-14	15-18	19-24	25-42
SQ2.3 Stress [0-42]	17.74	18	0-10	11-18	19-24	25-28	29-32	33-42
SQ2.4 Depression Anxiety Stress - Total [0-126]	42.53	40	0-20	21-40	41-56	57-67	68-82	83-126

S2.1 Characteristics of physical comorbidity [0-4]	% Prevalence				
Physical (un)health	7%				
Intoxication/ withdrawal symptoms	8%				
Physical disease	6%				
Pregnancy	1%				
S2.2 In psychiatric or psychological treatment [0-2]	% Prevalence				
Medication prescribed for for psychological or psychiatric problems	32%				
Current or within the past year psychiatric or psychological treatment	44%				
S2.3 Characteristics of psychiatric comorbidity [0-5]	% Prevalence				
Suicide risk. Plan, attempt	5%				
Psychotic symptoms. Hallucinations	11%				
Psychotic symptoms. Delusions	19%				
Confusion	10%				
S7.3 Limitations - Relational [0-20]	o None	1 Mild	2 Moderate	3 Severe	4 Complete
d770 intimate relationships	50%	15%	19%	13%	3%
d7600 parent-child relationships	83%	6%	5%	5%	2%
d750,d760 informal social relationships and family relationships	40%	17%	23%	16%	4%
d740 formal relationships	66%	13%	12%	8%	1%
d710-d729 General interpersonal interactions	57%	15%	17%	9%	2%
S7.2 Limitations - Basic [0-32]	o None	1 Mild	2 Moderate	3 Severe	4 Complete
d610 Acquiring and maintaining a place to live	81%	6%	5%	5%	4%
d620-d640 Household tasks	65%	14%	13%	6%	2%
d510,d520,d540 Self-care	84%	8%	5%	1%	2%
d5700 Ensuring one's physical comfort	95%	3%	1%	0%	1%
d5701 Managing diet and fitness	57%	15%	18%	9%	1%
d5702a Seeking and following advices and treatment by healthcare	68%	14%	12%	5%	1%
d5702b Protecting oneself from health risks due to risky behaviour	69%	15%	11%	4%	1%
d230 Carrying out daily routine	39%	17%	22%	18%	4%
Beperking - overige items	o None	1 Mild	2 Moderate	3 Severe	4 Complete
d810-d859 Education, work, and employment	34%	13%	20%	22%	11%
d870 Economic self-sufficiency	46%	15%	16%	16%	7%
d920 Recreation and leisure	41%	14%	21%	19%	5%
d930 Religion and spirituality	92%	5%	2%	1%	0%
d240 Handling stress and other psychological demands	18%	14%	27%	31%	9%
d1 Learning and applying knowledge	59%	16%	16%	8%	1%

## MATE Comparison group Opioids

n ≈ 1315

Male 81%

Age (M, Sd, Range) 42 10 18-75

MATE-scores	Description		In the 25% who scored lowest	75% achieved this score or a higher one	50% achieved this score or a higher one	30% achieved this score or a higher one	20% achieved this score or a higher one	In the 10% who scored highest
	Interval		25	25	20	10	10	10
	Percentile		25	50	70	80	90	100
	Mean	Median	Low	Medium	Above the Mean	Well above the Mean	High	Very High
S2.1 Characteristics of physical comorbidity [0-4]	0.55	0	0		1		2	3-4
S2.2 In psychiatric or psychological treatment [0-2]	0.67	0	0		1		2	
S2.3 Characteristics of psychiatric comorbidity [0-5]	0.44	0	0			1	2	3-5
S4.1 Dependence [0-7]	4.57	5	0-3	4-5	6	7		
S4.2 Abuse [0-4]	1.88	2	0-1	2	3		4	
S4.3 Severity dependence/abuse [0-9]	5.63	6	0-3	4-6	7-8		9	
S5.1 Physical complaints [0-40]	12.54	12	0-6	7-12	13-17	18-20	21-24	25-40
S6.1 Personality [0-8]	3.35	3	0-2	3	4	5	6	7-8
S7.1 Limitations - Total [0-76]	15.64	14	0-7	8-14	15-20	21-25	26-30	31-76
S7.2 Limitations - Basic [0-32]	5.24	4	0-1	2-4	5-7	8-9	10-12	13-32
S7.3 Limitations - Relational [0-20]	3.56	3	0-1	2-3	4-5	6	7-8	9-20
S7.4 Care & support [0-32]	4.93	4	0-1	2-4	5-6	7-8	9-12	13-32
S8.1 Positive external influence [0-12]	3.71	3	0-2	3	4-5	6	7	8-12
S8.2 Negative external influence [0-20]	3.73	3	0-1	2-3	4-5	6	7-8	9-20
S8.3 Need for care [0-20]	4.20	3	0-1	2-3	4-6	7-8	9-10	11-20
SQ1.1 Craving [0-20]	9.21	9	0-5	6-9	10-13	14-15	16-17	18-20
SQ2.1 Depression [0-42]	13.28	10	0-4	5-10	11-18	19-24	25-30	31-42
SQ2.2 Anxiety [0-42]	9.14	8	0-2	3-8	9-12	13-16	17-22	23-42
SQ2.3 Stress [0-42]	13.65	12	0-4	5-12	13-18	19-22	23-29	30-42
SQ2.4 Depression Anxiety Stress - Total [0-126]	36.03	32	0-14	15-32	33-48	49-60	61-76	77-126



S2.1 Characteristics of physical comorbidity [0-4]	% Prevalence				
Physical (un)health	19%				
Intoxication/ withdrawal symptoms	14%				
Physical disease	20%				
Pregnancy	1%				
S2.2 In psychiatric or psychological treatment [0-2]	% Prevalence				
Medication prescribed for for psychological or psychiatric problems	38%				
Current or within the past year psychiatric or psychological treatment	29%				
S2.3 Characteristics of psychiatric comorbidity [0-5]	% Prevalence				
Suicide risk. Plan, attempt	5%				
Psychotic symptoms. Hallucinations	11%				
Psychotic symptoms. Delusions	14%				
Confusion	10%				
S7.3 Limitations - Relational [0-20]	0 None	1 Mild	2 Moderate	3 Severe	4 Complete
d770 intimate relationships	58%	15%	15%	11%	2%
d7600 parent-child relationships	75%	7%	6%	7%	5%
d750,d760 informal social relationships and family relationships	56%	13%	16%	11%	4%
d740 formal relationships	70%	12%	11%	5%	2%
d710-d729 General interpersonal interactions	68%	13%	12%	6%	1%
S7.2 Limitations - Basic [0-32]	0 None	1 Mild	2 Moderate	3 Severe	4 Complete
d610 Acquiring and maintaining a place to live	68%	5%	6%	8%	12%
d620-d640 Household tasks	67%	12%	12%	7%	2%
d510,d520,d540 Self-care	75%	12%	8%	3%	1%
d5700 Ensuring one's physical comfort	90%	4%	2%	2%	2%
d5701 Managing diet and fitness	55%	15%	18%	10%	2%
d5702a Seeking and following advices and treatment by healthcare	66%	13%	12%	6%	3%
d5702b Protecting oneself from health risks due to risky behaviour	79%	11%	6%	3%	1%
d230 Carrying out daily routine	49%	14%	19%	15%	4%
Beperking - overige items	0 None	1 Mild	2 Moderate	3 Severe	4 Complete
d810-d859 Education, work, and employment	43%	10%	16%	17%	14%
d870 Economic self-sufficiency	38%	13%	17%	20%	12%
d920 Recreation and leisure	47%	12%	17%	16%	7%
d930 Religion and spirituality	92%	5%	2%	1%	0%
d240 Handling stress and other psychological demands	28%	14%	26%	25%	7%
d1 Learning and applying knowledge	63%	14%	14%	7%	1%

## MATE Comparison group Stimulants

n ≈ 4993

Male 84%

Age (M, Sd, Range) 33 9 15-69

MATE-scores	Description		In the 25% who scored lowest	75% achieved this score or a higher one	50% achieved this score or a higher one	30% achieved this score or a higher one	20% achieved this score or a higher one	In the 10% who scored highest
	Interval		25	25	20	10	10	10
	Percentile		25	50	70	80	90	100
	Mean	Median	Low	Medium	Above the Mean	Well above the Mean	High	Very High
S2.1 Characteristics of physical comorbidity [0-4]	0.28	0	0			1		2-4
S2.2 In psychiatric or psychological treatment [0-2]	0.69	0	0		1	2		
S2.3 Characteristics of psychiatric comorbidity [0-5]	0.63	0	0		1		2	3-5
S4.1 Dependence [0-7]	4.73	5	0-4	5	6	7		
S4.2 Abuse [0-4]	2.33	2	0-2		3		4	
S4.3 Severity dependence/abuse [0-9]	6.16	7	0-5	6-7	8		9	
S5.1 Physical complaints [0-40]	10.65	9	0-5	6-9	10-14	15-17	18-21	22-40
S6.1 Personality [0-8]	3.56	3	0-2	3	4	5	6	7-8
S7.1 Limitations - Total [0-76]	16.32	15	0-8	9-15	16-21	22-25	26-31	32-76
S7.2 Limitations - Basic [0-32]	4.96	4	0-1	2-4	5-7	8	9-11	12-32
S7.3 Limitations - Relational [0-20]	4.35	4	0-2	3-4	5-6	7	8-9	10-20
S7.4 Care & support [0-32]	4.13	3	0	1-3	4-5	6-8	9-11	12-32
S8.1 Positive external influence [0-12]	3.96	3	0-3		4-5	6	7	8-12
S8.2 Negative external influence [0-20]	3.88	3	0-2	3	4-5	6	7-8	9-20
S8.3 Need for care [0-20]	4.76	4	0-2	3-4	5-6	7-8	9-10	11-20
SQ1.1 Craving [0-20]	7.68	7	0-4	5-7	8-10	11-12	13-14	15-20
SQ2.1 Depression [0-42]	14.00	12	0-4	5-12	13-20	21-26	27-32	33-42
SQ2.2 Anxiety [0-42]	9.63	8	0-2	3-8	9-12	13-18	19-23	24-42
SQ2.3 Stress [0-42]	16.65	16	0-8	9-16	17-22	23-26	27-32	33-42
SQ2.4 Depression Anxiety Stress - Total [0-126]	40.28	36	0-16	17-36	37-54	55-66	67-82	83-126

S2.1 Characteristics of physical comorbidity [0-4]	% Prevalence				
Physical (un)health	10%				
Intoxication/ withdrawal symptoms	9%				
Physical disease	8%				
Pregnancy	1%				
S2.2 In psychiatric or psychological treatment [0-2]	% Prevalence				
Medication prescribed for for psychological or psychiatric problems	33%				
Current or within the past year psychiatric or psychological treatment	36%				
S2.3 Characteristics of psychiatric comorbidity [0-5]	% Prevalence				
Suicide risk. Plan, attempt	7%				
Psychotic symptoms. Hallucinations	17%				
Psychotic symptoms. Delusions	22%				
Confusion	11%				
S7.3 Limitations - Relational [0-20]	o None	1 Mild	2 Moderate	3 Severe	4 Complete
d770 intimate relationships	43%	14%	21%	18%	4%
d7600 parent-child relationships	76%	6%	6%	8%	4%
d750,d760 informal social relationships and family relationships	44%	15%	22%	16%	4%
d740 formal relationships	68%	12%	12%	7%	1%
d710-d729 General interpersonal interactions	66%	13%	14%	7%	1%
S7.2 Limitations - Basic [0-32]	o None	1 Mild	2 Moderate	3 Severe	4 Complete
d610 Acquiring and maintaining a place to live	70%	6%	6%	8%	9%
d620-d640 Household tasks	68%	13%	11%	6%	2%
d510,d520,d540 Self-care	84%	8%	5%	2%	0%
d5700 Ensuring one's physical comfort	92%	4%	2%	1%	1%
d5701 Managing diet and fitness	64%	13%	15%	7%	1%
d5702a Seeking and following advices and treatment by healthcare	66%	14%	12%	6%	3%
d5702b Protecting oneself from health risks due to risky behaviour	68%	13%	11%	6%	1%
d230 Carrying out daily routine	45%	13%	20%	17%	4%
Beperking - overige items	o None	1 Mild	2 Moderate	3 Severe	4 Complete
d810-d859 Education, work, and employment	41%	11%	16%	19%	13%
d870 Economic self-sufficiency	42%	13%	17%	19%	10%
d920 Recreation and leisure	44%	13%	19%	19%	5%
d930 Religion and spirituality	92%	5%	2%	1%	0%
d240 Handling stress and other psychological demands	22%	12%	28%	30%	8%
d1 Learning and applying knowledge	60%	15%	15%	8%	1%

## MATE Comparison group Gambling

n ≈ 1547

Male 89%

Age (M, Sd, Range) 37 12 16-80

MATE-scores	Description		In the 25% who scored lowest	75% achieved this score or a higher one	50% achieved this score or a higher one	30% achieved this score or a higher one	20% achieved this score or a higher one	In the 10% who scored highest
	Interval		25	25	20	10	10	10
	Percentile		25	50	70	80	90	100
	Mean	Median	Low	Medium	Above the Mean	Well above the Mean	High	Very High
S2.1 Characteristics of physical comorbidity [0-4]	0.18	0	0				1	2-4
S2.2 In psychiatric or psychological treatment [0-2]	0.45	0	0		1		2	
S2.3 Characteristics of psychiatric comorbidity [0-5]	0.28	0	0				1	2-5
S4.1 Dependence [0-7]								
S4.2 Abuse [0-4]								
S4.3 Severity dependence/abuse [0-9]								
S5.1 Physical complaints [0-40]	8.08	6	0-2	3-6	7-11	12-14	15-19	20-40
S6.1 Personality [0-8]	2.89	3	0-2	3	4		5-6	7-8
S7.1 Limitations - Total [0-76]	11.87	10	0-5	6-10	11-15	16-18	19-24	25-76
S7.2 Limitations - Basic [0-32]	2.79	2	0	1-2	3-4	5	6-8	9-32
S7.3 Limitations - Relational [0-20]	3.41	3	0-1	2-3	4-5	6	7-8	9-20
S7.4 Care & support [0-32]	2.72	1	0	1	2-4	5	6-8	9-32
S8.1 Positive external influence [0-12]	3.61	3	0-2	3	4	5-6		7-12
S8.2 Negative external influence [0-20]	2.37	2	0	1-2	3	4	5-6	7-20
S8.3 Need for care [0-20]	3.16	2	0-1	2	3-4	5	6-8	9-20
SQ1.1 Craving [0-20]	6.81	6	0-3	4-6	7-9	10	11-14	15-20
SQ2.1 Depression [0-42]	12.56	10	0-2	3-10	11-18	19-22	23-30	31-42
SQ2.2 Anxiety [0-42]	6.65	4	0	1-4	5-8	9-12	13-18	19-42
SQ2.3 Stress [0-42]	13.06	12	0-4	5-12	13-18	19-22	23-28	29-42
SQ2.4 Depression Anxiety Stress - Total [0-126]	32.24	26	0-10	11-26	27-42	43-54	55-70	71-126

S2.1 Characteristics of physical comorbidity [0-4]	% Prevalence				
Physical (un)health	3%				
Intoxication/ withdrawal symptoms	3%				
Physical disease	11%				
Pregnancy	0%				
S2.2 In psychiatric or psychological treatment [0-2]	% Prevalence				
Medication prescribed for for psychological or psychiatric problems	20%				
Current or within the past year psychiatric or psychological treatment	25%				
S2.3 Characteristics of psychiatric comorbidity [0-5]	% Prevalence				
Suicide risk. Plan, attempt	5%				
Psychotic symptoms. Hallucinations	4%				
Psychotic symptoms. Delusions	9%				
Confusion	6%				
S7.3 Limitations - Relational [0-20]	o None	1 Mild	2 Moderate	3 Severe	4 Complete
d770 intimate relationships	42%	17%	20%	18%	4%
d7600 parent-child relationships	81%	7%	6%	4%	1%
d750,d760 informal social relationships and family relationships	55%	14%	19%	11%	2%
d740 formal relationships	81%	8%	7%	4%	1%
d710-d729 General interpersonal interactions	72%	12%	10%	5%	1%
S7.2 Limitations - Basic [0-32]	o None	1 Mild	2 Moderate	3 Severe	4 Complete
d610 Acquiring and maintaining a place to live	82%	6%	5%	5%	2%
d620-d640 Household tasks	75%	11%	9%	4%	1%
d510,d520,d540 Self-care	91%	5%	3%	1%	1%
d5700 Ensuring one's physical comfort	98%	2%	0%	0%	0%
d5701 Managing diet and fitness	74%	11%	11%	3%	1%
d5702a Seeking and following advices and treatment by healthcare	77%	11%	9%	3%	0%
d5702b Protecting oneself from health risks due to risky behaviour	92%	4%	3%	1%	0%
d230 Carrying out daily routine	60%	12%	16%	9%	2%
Beperking - overige items	o None	1 Mild	2 Moderate	3 Severe	4 Complete
d810-d859 Education, work, and employment	57%	9%	12%	14%	7%
d870 Economic self-sufficiency	41%	12%	17%	20%	10%
d920 Recreation and leisure	48%	14%	20%	15%	3%
d930 Religion and spirituality	92%	4%	2%	1%	0%
d240 Handling stress and other psychological demands	35%	15%	24%	21%	4%
d1 Learning and applying knowledge	73%	11%	10%	4%	1%

## MATE-Y Comparison group Alcohol

n ≈ 228

Male 67%

Age (M, Sd, Range) 20 3 13-26

MATE-Y-scores	Description		In the 25% who scored lowest	75% achieved this score or a higher one	50% achieved this score or a higher one	30% achieved this score or a higher one	20% achieved this score or a higher one	In the 10% who scored highest
	Interval		25	25	20	10	10	10
	Percentile		25	50	70	80	90	100
	Mean	Median	Low	Medium	Above the Mean	Well above the Mean	High	Very High
S2.2 In psychiatric or psychological treatment [0-2]	0.99	1	0	1		2		
S2b.1 Social Phobia [0-2]	0.79	0	0		1	2		
S2b.2 Panic Disorder [0-2]	0.59	0	0		1		2	
S2b.3 General Anxiety Disorder [0-4]	1.32	1	0	1	2	3		4
S2b.4 Post Traumatic Stress Disorder [0-4]	1.76	2	0	1-2	3	4		
S2b.5 Eating Disorders [0-4]	0.96	1	0	1		2	3	4
S2b.6 Depression [0-7]	3.48	4	0-1	2-4	5	6		7
S2b.7 Mania/Manic Depression [0-5]	1.69	1	0	1	2	3	4	5
S2b.8 ADHD [0-6]	3.26	4	0-1	2-4	5		6	
S2b.9 Oppositional Defiant Disorder [0-7]	2.52	2	0-1	2	3	4	5	6-7
S2b.10 Conduct Disorder [0-8]	0.91	0	0		1	2	3	4-8
S4.3 Severity dependence/abuse [0-9]	5.54	6	0-4	5-6	7	8	9	
S4a.1 DSM-5: Ernst van de Stoornis in het gebruik van het Primaire probleemmiddel [0-11]	6.90	7	0-5	6-7	8-9	10		11
S5.1 Physical complaints [0-40]	10.39	9	0-4	5-9	10-14	15-17	18-22	23-40
S7.1 Limitations - Total [0-76]	14.26	11	0-5	6-11	12-20	21-24	25-29	30-76
S7.2 Limitations - Basic [0-32]	4.57	4	0-1	2-4	5-6	7-8	9-11	12-32
S7.3 Limitations - Relational [0-20]	3.52	3	0-1	2-3	4	5-6	7-9	10-20
S7.4 Care & support [0-32]	4.03	2	0	1-2	3-5	6-8	9-12	13-32
S8.1 Positive external influence [0-12]	6.55	6	0-4	5-6	7-9		10-11	12
S8.2 Negative external influence [0-20]	3.04	2	0	1-2	3-4	5	6-7	8-20
S8.3 Need for care [0-20]	2.60	2	0-0	1-2	3	4	5-7	8-20
S10.1 Motivation Person [0-18]	12.37	12	0-11	12	13-14	15-16		17-18
S10.2 Motivation Family [0-12]	6.59	7	0-3	4-7	8-9		10-11	12
SQ1.1 Craving [0-20]	6.36	6	0-2	3-6	7-9	10-11	12-13	14-20

S2.2 In psychiatric or psychological treatment [0-2]	% Prevalence				
Medication prescribed for for psychological or psychiatric problems	31%				
Nu of eerder onder psychiatrische of psychologische behandeling	68%				
Indicaties voor consult - items	% Prevalence				
Psychotic symptoms. Hallucinations	15%				
Psychotic symptoms. Delusions	20%				
Physical disease	3%				
Pregnancy	0%				
Aanwijzingen voor Zwakbegaafdheid	16%				
Aanwijzingen voor Verstandelijke beperking	8%				
Aanwijzingen voor ASS	18%				
Veiligheidsrisico	4%				
Aanwijzingen voor Automutilatie	8%				
S7.3 Limitations - Relational [0-20]	0 None	1 Mild	2 Moderate	3 Severe	4 Complete
d770 intimate relationships	69%	8%	11%	11%	1%
d7500 Vrienden	69%	5%	12%	10%	4%
d7601 Kind-ouder relaties	41%	11%	21%	18%	9%
d740 formal relationships	79%	7%	8%	5%	0%
d710-d729 General interpersonal interactions	79%	6%	10%	5%	0%
S7.2 Limitations - Basic [0-32]	0 None	1 Mild	2 Moderate	3 Severe	4 Complete
d610 Acquiring and maintaining a place to live	85%	3%	5%	3%	4%
d620-d640 Household tasks	76%	7%	10%	6%	0%
d510,d520,d540 Self-care	92%	2%	4%	2%	0%
d5700 Ensuring one's physical comfort	98%	0%	0%	2%	0%
d5701 Managing diet and fitness	56%	10%	20%	11%	4%
d5702a Seeking and following advices and treatment by healthcare	82%	6%	6%	3%	3%
d5702b Protecting oneself from health risks due to risky behaviour	63%	8%	15%	9%	5%
d230 Carrying out daily routine	43%	11%	17%	21%	8%
Beperking - overige items	0 None	1 Mild	2 Moderate	3 Severe	4 Complete
d810-d859 Education, work, and employment - Aanwezigheid	43%	10%	19%	18%	9%
d810-d859 Education, work, and employment - Gedrag	65%	11%	10%	10%	4%
d870 Economic self-sufficiency	55%	11%	14%	13%	7%
d920 Recreation and leisure	52%	9%	17%	17%	5%
d9205 Sociale activiteiten	72%	9%	11%	6%	2%
d240 Handling stress and other psychological demands	35%	11%	25%	21%	7%

## MATE-Y Comparison group Cannabis

n ≈ 1255

Male 79%

Age (M, Sd, Range) 18 3 12-27

MATE-Y-scores	Description		In the 25% who scored lowest	75% achieved this score or a higher one	50% achieved this score or a higher one	30% achieved this score or a higher one	20% achieved this score or a higher one	In the 10% who scored highest
	Interval		25	25	20	10	10	10
	Percentile		25	50	70	80	90	100
	Mean	Median	Low	Medium	Above the Mean	Well above the Mean	High	Very High
S2.2 In psychiatric or psychological treatment [0-2]	0.98	1	0	1		2		
S2b.1 Social Phobia [0-2]	0.70	0	0		1	2		
S2b.2 Panic Disorder [0-2]	0.43	0	0		1			2
S2b.3 General Anxiety Disorder [0-4]	1.16	1	0	1	2		3	4
S2b.4 Post Traumatic Stress Disorder [0-4]	1.58	1	0	1	2	3	4	
S2b.5 Eating Disorders [0-4]	0.98	1	0	1		2	3	4
S2b.6 Depression [0-7]	3.24	3	0-1	2-3	4-5		6	7
S2b.7 Mania/Manic Depression [0-5]	1.81	2	0-1	2	3		4	5
S2b.8 ADHD [0-6]	3.36	4	0-2	3-4		5		6
S2b.9 Oppositional Defiant Disorder [0-7]	3.24	3	0-2	3	4	5	6	7
S2b.10 Conduct Disorder [0-8]	1.61	1	0	1	2	3	4	5-8
S4.3 Severity dependence/abuse [0-9]	5.77	6	0-4	5-6	7	8		9
S4a.1 DSM-5: Ernst van de Stoornis in het gebruik van het Primaire probleemmiddel [0-11]	7.27	8	0-5	6-8	9	10		11
S5.1 Physical complaints [0-40]	8.87	8	0-3	4-8	9-12	13-15	16-19	20-40
S7.1 Limitations - Total [0-76]	14.75	13	0-6	7-13	14-19	20-23	24-30	31-76
S7.2 Limitations - Basic [0-32]	4.14	3	0-1	2-3	4-5	6-7	8-10	11-32
S7.3 Limitations - Relational [0-20]	3.85	3	0-1	2-3	4-5	6	7-8	9-20
S7.4 Care & support [0-32]	5.09	3	0	1-3	4-6	7-9	10-16	17-32
S8.1 Positive external influence [0-12]	7.00	7	0-4	5-7	8-9	10	11-12	
S8.2 Negative external influence [0-20]	3.62	3	0-1	2-3	4-5	6	7	8-20
S8.3 Need for care [0-20]	2.56	2	0	1-2	3-4	5	6	7-20
S10.1 Motivation Person [0-18]	11.77	12	0-10	11-12	13	14-15	16	17-18
S10.2 Motivation Family [0-12]	7.72	9	0-5	6-9		10	11-12	
SQ1.1 Craving [0-20]	7.22	7	0-4	5-7	8-10	11	12-14	15-20



S2.2 In psychiatric or psychological treatment [0-2]	% Prevalence				
Medication prescribed for for psychological or psychiatric problems	28%				
Nu of eerder onder psychiatrische of psychologische behandeling	70%				
Indicaties voor consult - items	% Prevalence				
Psychotic symptoms. Hallucinations	20%				
Psychotic symptoms. Delusions	25%				
Physical disease	5%				
Pregnancy	1%				
Aanwijzingen voor Zwakbegaafdheid	17%				
Aanwijzingen voor Verstandelijke beperking	4%				
Aanwijzingen voor ASS	17%				
Veiligheidsrisico	3%				
Aanwijzingen voor Automutilatie	6%				
S7.3 Limitations - Relational [0-20]	0 None	1 Mild	2 Moderate	3 Severe	4 Complete
d770 intimate relationships	76%	8%	8%	6%	2%
d7500 Vrienden	72%	8%	11%	7%	2%
d7601 Kind-ouder relaties	33%	12%	21%	25%	9%
d740 formal relationships	65%	11%	13%	9%	2%
d710-d729 General interpersonal interactions	74%	8%	11%	6%	1%
S7.2 Limitations - Basic [0-32]	0 None	1 Mild	2 Moderate	3 Severe	4 Complete
d610 Acquiring and maintaining a place to live	90%	2%	3%	3%	2%
d620-d640 Household tasks	75%	10%	9%	4%	1%
d510,d520,d540 Self-care	89%	5%	4%	2%	0%
d5700 Ensuring one's physical comfort	98%	1%	0%	0%	1%
d5701 Managing diet and fitness	59%	13%	15%	10%	3%
d5702a Seeking and following advices and treatment by healthcare	76%	10%	10%	3%	1%
d5702b Protecting oneself from health risks due to risky behaviour	68%	11%	11%	8%	2%
d230 Carrying out daily routine	39%	13%	22%	21%	6%
Beperking - overige items	0 None	1 Mild	2 Moderate	3 Severe	4 Complete
d810-d859 Education, work, and employment - Aanwezigheid	38%	12%	17%	22%	11%
d810-d859 Education, work, and employment - Gedrag	52%	10%	17%	16%	5%
d870 Economic self-sufficiency	48%	11%	18%	17%	6%
d920 Recreation and leisure	50%	11%	19%	15%	5%
d9205 Sociale activiteiten	74%	10%	8%	7%	1%
d240 Handling stress and other psychological demands	35%	14%	24%	21%	7%

## MATE-Y Comparison group Stimulants

n ≈ 273

Male 71%

Age (M, Sd, Range) 20 3

14-28

MATE-Y-scores	Description		In the 25% who scored lowest	75% achieved this score or a higher one	50% achieved this score or a higher one	30% achieved this score or a higher one	20% achieved this score or a higher one	In the 10% who scored highest
	Interval		25	25	20	10	10	10
	Percentile		25	50	70	80	90	100
	Mean	Median	Low	Medium	Above the Mean	Well above the Mean	High	Very High
S2.2 In psychiatric or psychological treatment [0-2]	0.83	1	0	1		2		
S2b.1 Social Phobia [0-2]	0.90	1	0	1	2			
S2b.2 Panic Disorder [0-2]	0.66	0	0		1		2	
S2b.3 General Anxiety Disorder [0-4]	1.39	1	0	1	2		3	4
S2b.4 Post Traumatic Stress Disorder [0-4]	1.77	2	0	1-2	3		4	
S2b.5 Eating Disorders [0-4]	1.33	1	0	1	2		3	4
S2b.6 Depression [0-7]	3.81	4	0-2	3-4	5	6		7
S2b.7 Mania/Manic Depression [0-5]	2.28	2	0-1	2	3	4		5
S2b.8 ADHD [0-6]	3.43	4	0-2	3-4	5		6	
S2b.9 Oppositional Defiant Disorder [0-7]	3.06	3	0-1	2-3	4	5	6	7
S2b.10 Conduct Disorder [0-8]	1.58	1	0	1	2	3	4	5-8
S4.3 Severity dependence/abuse [0-9]	6.77	7	0-5	6-7	8	9		
S4a.1 DSM-5: Ernst van de Stoornis in het gebruik van het Primaire probleemmiddel [0-11]	8.47	9	0-7	8-9	10		11	
S5.1 Physical complaints [0-40]	11.72	11	0-5	6-11	12-16	17-19	20-23	24-40
S7.1 Limitations - Total [0-76]	18.08	15	0-8	9-15	16-23	24-29	30-37	38-76
S7.2 Limitations - Basic [0-32]	5.78	4	0-2	3-4	5-7	8-10	11-14	15-32
S7.3 Limitations - Relational [0-20]	4.43	4	0-2	3-4	5-6	7	8-10	11-20
S7.4 Care & support [0-32]	5.37	3	0	1-3	4-7	8-10	11-16	17-32
S8.1 Positive external influence [0-12]	6.71	7	0-4	5-7	8-9	10	11	12
S8.2 Negative external influence [0-20]	4.03	3	0-2	3	4-5	6-7	8	9-20
S8.3 Need for care [0-20]	3.06	2	0-1	2	3-4	5	6-7	8-20
S10.1 Motivation Person [0-18]	12.83	12	0-12		13-15	16		17-18
S10.2 Motivation Family [0-12]	7.30	8	0-5	6-8	9	10	11-12	
SQ1.1 Craving [0-20]	7.65	7	0-4	5-7	8-10	11-12	13-15	16-20

S2.2 In psychiatric or psychological treatment [0-2]	% Prevalence				
Medication prescribed for for psychological or psychiatric problems	25%				
Nu of eerder onder psychiatrische of psychologische behandeling	58%				
Indicaties voor consult - items	% Prevalence				
Psychotic symptoms. Hallucinations	39%				
Psychotic symptoms. Delusions	41%				
Physical disease	7%				
Pregnancy	0%				
Aanwijzingen voor Zwakbegaafdheid	17%				
Aanwijzingen voor Verstandelijke beperking	7%				
Aanwijzingen voor ASS	14%				
Veiligheidsrisico	6%				
Aanwijzingen voor Automutilatie	9%				
S7.3 Limitations - Relational [0-20]	0 None	1 Mild	2 Moderate	3 Severe	4 Complete
d770 intimate relationships	71%	6%	10%	10%	3%
d7500 Vrienden	68%	7%	15%	8%	2%
d7601 Kind-ouder relaties	35%	9%	19%	25%	13%
d740 formal relationships	69%	8%	13%	7%	3%
d710-d729 General interpersonal interactions	68%	9%	13%	8%	2%
S7.2 Limitations - Basic [0-32]	0 None	1 Mild	2 Moderate	3 Severe	4 Complete
d610 Acquiring and maintaining a place to live	83%	3%	4%	4%	7%
d620-d640 Household tasks	74%	7%	9%	8%	2%
d510,d520,d540 Self-care	88%	5%	5%	2%	0%
d5700 Ensuring one's physical comfort	92%	3%	1%	2%	2%
d5701 Managing diet and fitness	54%	12%	16%	14%	6%
d5702a Seeking and following advices and treatment by healthcare	75%	7%	8%	8%	2%
d5702b Protecting oneself from health risks due to risky behaviour	53%	10%	16%	16%	6%
d230 Carrying out daily routine	36%	9%	21%	25%	9%
Beperking - overige items	0 None	1 Mild	2 Moderate	3 Severe	4 Complete
d810-d859 Education, work, and employment - Aanwezigheid	36%	9%	20%	24%	11%
d810-d859 Education, work, and employment - Gedrag	55%	7%	15%	15%	8%
d870 Economic self-sufficiency	42%	10%	19%	16%	12%
d920 Recreation and leisure	49%	9%	20%	17%	6%
d9205 Sociale activiteiten	66%	10%	15%	6%	4%
d240 Handling stress and other psychological demands	31%	10%	20%	29%	9%

## MATE-Y Comparison group Behavioral addictions

n ≈ 358

Male 97%

Age (M, Sd, Range) 18 3

11-24

MATE-Y-scores	Description		In the 25% who scored lowest	75% achieved this score or a higher one	50% achieved this score or a higher one	30% achieved this score or a higher one	20% achieved this score or a higher one	In the 10% who scored highest
	Interval		25	25	20	10	10	10
	Percentile		25	50	70	80	90	100
	Mean	Median	Low	Medium	Above the Mean	Well above the Mean	High	Very High
S2.2 In psychiatric or psychological treatment [0-2]	0.71	1	0	1			2	
S2b.1 Social Phobia [0-2]	0.67	0	0		1		2	
S2b.2 Panic Disorder [0-2]	0.20	0	0				1	2
S2b.3 General Anxiety Disorder [0-4]	0.88	1	0	1		2		3-4
S2b.4 Post Traumatic Stress Disorder [0-4]	0.92	0	0		1	2	3	4
S2b.5 Eating Disorders [0-4]	0.56	0	0		1		2	3-4
S2b.6 Depression [0-7]	2.27	2	0	1-2	3	4	5	6-7
S2b.7 Mania/Manic Depression [0-5]	1.23	1	0	1	2		3	4-5
S2b.8 ADHD [0-6]	2.85	3	0-1	2-3	4	5		6
S2b.9 Oppositional Defiant Disorder [0-7]	2.32	2	0-1	2	3	4	5	6-7
S2b.10 Conduct Disorder [0-8]	0.65	0	0		1		2	3-8
S4.3 Severity dependence/abuse [0-9]								
S4a.1 DSM-5: Ernst van de Stoornis in het gebruik van het Primaire probleemmiddel [0-11]								
S5.1 Physical complaints [0-40]	5.62	4	0-2	3-4	5-7	8-10	11-13	14-40
S7.1 Limitations - Total [0-76]	12.52	11	0-5	6-11	12-17	18-19	20-25	26-76
S7.2 Limitations - Basic [0-32]	3.18	2	0	1-2	3-4	5	6-8	9-32
S7.3 Limitations - Relational [0-20]	3.33	2.5	0	1-2	3-4	5-6	7-8	9-20
S7.4 Care & support [0-32]	2.92	1	0	1	2-3	4	5-7	8-32
S8.1 Positive external influence [0-12]	7.05	7	0-4	5-7	8-9	10	11	12
S8.2 Negative external influence [0-20]	2.16	2	0	1-2	3	4	5	6-20
S8.3 Need for care [0-20]	2.15	2	0	1-2	3	4	5	6-20
S10.1 Motivation Person [0-18]	11.78	12	0-10	11-12		13-14	15-16	17-18
S10.2 Motivation Family [0-12]	7.67	9	0-5	6-9		10	11-12	
SQ1.1 Craving [0-20]	6.78	6	0-3	4-6	7-9	10-11	12-14	15-20

S2.2 In psychiatric or psychological treatment [0-2]	% Prevalence				
Medication prescribed for for psychological or psychiatric problems	19%				
Nu of eerder onder psychiatrische of psychologische behandeling	52%				
Indicaties voor consult - items	% Prevalence				
Psychotic symptoms. Hallucinations	5%				
Psychotic symptoms. Delusions	11%				
Physical disease	3%				
Pregnancy	0%				
Aanwijzingen voor Zwakbegaafdheid	9%				
Aanwijzingen voor Verstandelijke beperking	1%				
Aanwijzingen voor ASS	26%				
Veiligheidsrisico	1%				
Aanwijzingen voor Automutilatie	1%				
S7.3 Limitations - Relational [0-20]	0 None	1 Mild	2 Moderate	3 Severe	4 Complete
d770 intimate relationships	80%	7%	9%	3%	1%
d7500 Vrienden	68%	7%	13%	9%	3%
d7601 Kind-ouder relaties	43%	15%	20%	18%	4%
d740 formal relationships	82%	6%	8%	3%	1%
d710-d729 General interpersonal interactions	69%	8%	13%	7%	3%
S7.2 Limitations - Basic [0-32]	0 None	1 Mild	2 Moderate	3 Severe	4 Complete
d610 Acquiring and maintaining a place to live	96%	1%	1%	1%	1%
d620-d640 Household tasks	78%	11%	7%	2%	2%
d510,d520,d540 Self-care	84%	6%	6%	4%	1%
d5700 Ensuring one's physical comfort	99%	0%	0%	0%	0%
d5701 Managing diet and fitness	67%	14%	10%	7%	3%
d5702a Seeking and following advices and treatment by healthcare	88%	4%	5%	2%	0%
d5702b Protecting oneself from health risks due to risky behaviour	92%	3%	4%	1%	0%
d230 Carrying out daily routine	41%	12%	22%	19%	6%
Beperking - overige items	0 None	1 Mild	2 Moderate	3 Severe	4 Complete
d810-d859 Education, work, and employment - Aanwezigheid	52%	9%	15%	18%	6%
d810-d859 Education, work, and employment - Gedrag	57%	10%	14%	15%	4%
d870 Economic self-sufficiency	60%	10%	11%	14%	5%
d920 Recreation and leisure	51%	9%	18%	18%	4%
d9205 Sociale activiteiten	63%	10%	15%	9%	3%
d240 Handling stress and other psychological demands	52%	9%	19%	17%	3%



## Example cases

---

Example cases for each of the five MATE comparison groups were derived from data from actual treatment seekers. The MATE scoring form for that person, together with the person's age and sex, is presented on the left-hand page. The right hand page contains the comparison table for the linked comparison groups, with the scores for a particular person marked, so that the comparison scores can be derived. Similarly, on the third page, the item scores for that person are presented.


**MATE**

**Measurements in the Addictions for Triage and Evaluation**  
**Version: MATE-en 2.1**

**Scoring Form**

Age: **55**

Assessed by: 

[-substance-] = **alcohol**

Gender: ☒ ☐ ☐ ☐

Module	Score	Scoring and calculation	Range min-max	Result	Threshold value [MD]: used in the MATE dimension scores
2. Indicators for psychiatric or medical consultation	Characteristics of physical comorbidity [S2.1]	1 point for each Yes on physical health, intoxication, physical disease, pregnancy. Total.	0 - 4	<b>0</b>	
	Undergoing psychiatric or psychological treatment [S2.2]	1 point for medication for psych. problems, 1 point for recent psych. treatment. Total.	0 - 2	<b>0</b>	= 2[MD]
	Characteristics of psychiatric comorbidity [S2.3]	2 points for suicide plan/attempt, 1 point for each Yes on hallucinations, delusions, confusion. Total.	0 - 5	<b>0</b>	≥ 2[MD]
4. Substance dependence and abuse	Dependence [S4.1]	1 point for each Yes on the first 7 items (1-7). Total.	0 - 7	<b>6</b>	≥ 3
	Abuse [S4.2]	1 point for each Yes on the last 4 items (8 -11). Total.	0 - 4	<b>1</b>	≥ 1
	Severity of dependence/abuse [S4.3]	1 point for each Yes, except for Item 1 and Item 10 (they don't count). Total.	0 - 9	<b>6</b>	≥ 8[MD]
5. Physical complaints	Physical complaints [S5.1]	Sum of the 10 item values.	0 - 40	<b>8</b>	
6. Personality	Personality [S6.1]	1 point for a No answer on Item 3, 1 point for each Yes answer on the other items. Total.	0 - 8	<b>5</b>	≥ 4
7+8 MATE-ICN	Limitations - Total [S7.1]	Sum of the values of the 19 limitation items.	0 - 76	<b>33</b>	
	Limitations - Basic [S7.2]	Sum of the values of these 8 items: d610 Acquiring and maintaining a place to live; d620-d640 Household tasks; d510,520,540 Self-care; d5700 Ensuring one's physical comfort; d5701 Managing diet and fitness; d5702a Seeking and following advices and treatment by healthcare; d5702b Protecting oneself from health risks due to risky behaviour; d230 Carrying out daily routine	0 - 32	<b>9</b>	≥ 12[MD]
	Limitations - Relationships [S7.3]	Sum of the values of these 5 items: d770 Intimate relationships; d7600 Parent-child relationships; d750,d760 Informal social relationships and family relationships; d740 Formal relationships; d710-d720 General interpersonal interactions	0 - 20	<b>12</b>	
	Care and support [S7.4]	Sum of the values of the 8 Care and support items.	0 - 32	<b>2</b>	
	Positive external influences [S8.1]	Sum of the values of these 3 items: e310-e325+ Partner etc.; e550+ Legal factors; e598+ Other factors..	0 - 12	<b>0</b>	
	Negative external influences [S8.2]	Sum of the values of 5 items: e310-e325- Partner etc.; Loss of relationship; e460- Societal attitudes ; e550- Legal factors; e598- Other factors.	0 - 20	<b>0</b>	≥ 10[MD]
	Need for care [S8.3]	1 point for each Yes either from the assessor or from the person on the question about care needs (15 in Module 7 and 5 in Module 8). Total.	0 - 20	<b>13</b>	
	Q1. Craving	Craving [SQ1.1]	Sum of the 5 item values.	0 - 20	<b>5</b>
Q2. Depression, anxiety, and stress	Depression [SQ2.1]	Sum of the 7 item values (#3,#5,#10,#13,#16,#17,#21). Multiply the sum by 2.	0 - 42	<b>36</b>	≥ 21
	Anxiety [SQ2.2]	Sum of the 7 item values (#2,#4,#7,#9,#15,#19,#20). Multiply the sum by 2.	0 - 42	<b>30</b>	≥ 15
	Stress [SQ2.3]	Sum of the 7 item values (#1,#6,#8,#11,#12,#14,#18). Multiply the sum by 2.	0 - 42	<b>24</b>	≥ 26
	Depression Anxiety Stress - Total [SQ2.4]	Sum of SQ2.1, SQ2.2, and SQ2.3	0 - 126	<b>90</b>	≥ 60[MD]

Schippers, G. M., Broekman, T. G., & Buchholz, A. (2011). MATE 2.1. Manual and Protocol. English Edition: W. M. Cox.

MATE-en 2.1  
http://www.mateinfo.eu



## MATE Comparison group Alcohol

n ≈ 14 813

Male 73%

Age (M, Sd, Range) 45 13 13-91

MATE-scores	Description		In the 25% who scored lowest	75% achieved this score or a higher one	50% achieved this score or a higher one	30% achieved this score or a higher one	20% achieved this score or a higher one	In the 10% who scored highest
	Interval		25	25	20	10	10	10
	Percentile		25	50	70	80	90	100
	Mean	Median	Low	Medium	Above the Mean	Well above the Mean	High	Very High
S2.1 Characteristics of physical comorbidity [0-4]	0.51	0	0		1		2	3-4
S2.2 In psychiatric or psychological treatment [0-2]	0.75	1	0	1		2		
S2.3 Characteristics of psychiatric comorbidity [0-5]	0.46	0	0			1	2	3-5
S4.1 Dependence [0-7]	4.52	5	0-3	4-5	6		7	
S4.2 Abuse [0-4]	2.08	2	0-1	2	3		4	
S4.3 Severity dependence/abuse [0-9]	5.77	6	0-4	5-6	7	8	9	
S5.1 Physical complaints [0-40]	11.39	10	0-5	6-10	11-15	16-18	19-22	23-40
S6.1 Personality [0-8]	3.21	3	0-2	3	4	5	6	7-8
S7.1 Limitations - Total [0-76]	14.62	13	0-7	8-13	14-19	20-23	24-28	29-76
S7.2 Limitations - Basic [0-32]	4.35	3	0-1	2-3	4-6	7-8	9-11	12-32
S7.3 Limitations - Relational [0-20]	4.12	3	0-2	3	4-5	6-7	8-9	10-20
S7.4 Care & support [0-32]	3.37	2	0	1-2	3-4	5-6	7-9	10-32
S8.1 Positive external influence [0-12]	3.68	3	0-2	3	4-5	6		7-12
S8.2 Negative external influence [0-20]	3.24	3	0-1	2-3	4	5-6	7	8-20
S8.3 Need for care [0-20]	4.08	3	0-1	2-3	4-5	6-7	8-9	10-20
SQ1.1 Craving [0-20]	7.35	7	0-4	5-7	8-9	10-11	12-15	16-20
SQ2.1 Depression [0-42]	13.86	12	0-4	5-12	13-20	21-26	27-32	33-42
SQ2.2 Anxiety [0-42]	9.61	7	0-2	3-7	8-12	13-18	19-24	25-42
SQ2.3 Stress [0-42]	14.42	12	0-6	7-12	13-20	21-24	25-30	31-42
SQ2.4 Depression Anxiety Stress - Total [0-126]	37.88	32	0-14	15-32	33-52	53-64	65-80	81-126

page intentionally left blank

S2.1 Characteristics of physical comorbidity [0-4]	% Prevalence				
Physical (un)health	17%				
Intoxication/ withdrawal symptoms	16%				
Physical disease	17%				
Pregnancy	0%				
S2.2 In psychiatric or psychological treatment [0-2]	% Prevalence				
Medication prescribed for for psychological or psychiatric problems	40%				
Current or within the past year psychiatric or psychological treatment	35%				
S2.3 Characteristics of psychiatric comorbidity [0-5]	% Prevalence				
Suicide risk. Plan, attempt	7%				
Psychotic symptoms. Hallucinations	8%				
Psychotic symptoms. Delusions	13%				
Confusion	12%				
S7.3 Limitations - Relational [0-20]	o None	1 Mild	2 Moderate	3 Severe	4 Complete
d770 intimate relationships	41%	14%	20%	20%	5%
d7600 parent-child relationships	67%	9%	11%	10%	4%
d750,d760 informal social relationships and family relationships	56%	14%	16%	11%	3%
d740 formal relationships	76%	9%	9%	5%	1%
d710-d729 General interpersonal interactions	66%	12%	14%	7%	1%
S7.2 Limitations - Basic [0-32]	o None	1 Mild	2 Moderate	3 Severe	4 Complete
d610 Acquiring and maintaining a place to live	82%	5%	4%	5%	4%
d620-d640 Household tasks	65%	12%	13%	8%	2%
d510,d520,d540 Self-care	82%	9%	7%	2%	1%
d5700 Ensuring one's physical comfort	95%	3%	1%	1%	1%
d5701 Managing diet and fitness	59%	13%	16%	10%	2%
d5702a Seeking and following advices and treatment by healthcare	69%	14%	11%	5%	1%
d5702b Protecting oneself from health risks due to risky behaviour	76%	11%	8%	4%	1%
d230 Carrying out daily routine	53%	13%	18%	13%	3%
Beperking - overige items	o None	1 Mild	2 Moderate	3 Severe	4 Complete
d810-d859 Education, work, and employment	49%	10%	14%	17%	10%
d870 Economic self-sufficiency	60%	11%	12%	12%	5%
d920 Recreation and leisure	45%	13%	19%	18%	5%
d930 Religion and spirituality	93%	4%	2%	1%	0%
d240 Handling stress and other psychological demands	23%	13%	25%	32%	8%
d1 Learning and applying knowledge	63%	15%	14%	7%	1%

MATE		Measurements in the Addictions for Triage and Evaluation Version: MATE-en 2.1		Scoring Form	
Assessed by: 		[—substance—] = <u>cannabis</u>		Age: <u>28</u>	Gender: <input checked="" type="checkbox"/>  <input type="checkbox"/> 
Module	Score	Scoring and calculation	Range min-max	Result	Threshold value [MD]: used in the MATE dimension scores
2. Indicators for psychiatric or medical consultation	Characteristics of physical comorbidity [S2.1]	1 point for each Yes on physical health, intoxication, physical disease, pregnancy. Total.	0 – 4	<b>0</b>	
	Undergoing psychiatric or psychological treatment [S2.2]	1 point for medication for psych. problems, 1 point for recent psych. treatment. Total.	0 – 2	<b>1</b>	= 2[MD]
	Characteristics of psychiatric comorbidity [S2.3]	2 points for suicide plan/attempt, 1 point for each Yes on hallucinations, delusions, confusion. Total.	0 – 5	<b>0</b>	≥ 2[MD]
4. Substance dependence and abuse	Dependence [S4.1]	1 point for each Yes on the first 7 items (1-7). Total.	0 – 7	<b>5</b>	≥ 3
	Abuse [S4.2]	1 point for each Yes on the last 4 items (8 -11). Total.	0 – 4	<b>1</b>	≥ 1
	Severity of dependence/abuse [S4.3]	1 point for each Yes, except for Item 1 and Item 10 (they don't count). Total.	0 – 9	<b>5</b>	≥ 8[MD]
5. Physical complaints	Physical complaints [S5.1]	Sum of the 10 item values.	0 – 40	<b>7</b>	
6. Personality	Personality [S6.1]	1 point for a No answer on Item 3, 1 point for each Yes answer on the other items. Total.	0 – 8	<b>4</b>	≥ 4
7+8 MATE-ICN	Limitations - Total [S7.1]	Sum of the values of the 19 limitation items.	0 – 76	<b>7</b>	
	Limitations - Basic [S7.2]	Sum of the values of these 8 items: d610 Acquiring and maintaining a place to live; d620-d640 Household tasks; d510,520,540 Self-care; d5700 Ensuring one's physical comfort; d5701 Managing diet and fitness; d5702a Seeking and following advices and treatment by healthcare; d5702b Protecting oneself from health risks due to risky behaviour; d230 Carrying out daily routine	0 – 32	<b>1</b>	≥ 12[MD]
	Limitations - Relationships [S7.3]	Sum of the values of these 5 items: d770 Intimate relationships; d7600 Parent-child relationships; d750,d760 Informal social relationships and family relationships; d740 Formal relationships; d710-d720 General interpersonal interactions	0 – 20	<b>2</b>	
	Care and support [S7.4]	Sum of the values of the 8 Care and support items.	0 – 32	<b>8</b>	
	Positive external influences [S8.1]	Sum of the values of these 3 items: e310-e325+ Partner etc.; e550+ Legal factors; e598+ Other factors..	0 – 12	<b>4</b>	
	Negative external influences [S8.2]	Sum of the values of 5 items: e310-e325- Partner etc.; Loss of relationship; e460- Societal attitudes ; e550- Legal factors; e598- Other factors.	0 – 20	<b>8</b>	≥ 10[MD]
	Need for care [S8.3]	1 point for each Yes either from the assessor or from the person on the question about care needs (15 in Module 7 and 5 in Module 8). Total.	0 – 20	<b>1</b>	
	Q1. Craving	Craving [SQ1.1]	Sum of the 5 item values.	0 – 20	<b>9</b>
Q2. Depression, anxiety, and stress	Depression [SQ2.1]	Sum of the 7 item values (#3,#5,#10,#13,#16,#17,#21). Multiply the sum by 2.	0 – 42	<b>16</b>	≥ 21
	Anxiety [SQ2.2]	Sum of the 7 item values (#2,#4,#7,#9,#15,#19,#20). Multiply the sum by 2.	0 – 42	<b>14</b>	≥ 15
	Stress [SQ2.3]	Sum of the 7 item values (#1,#6,#8,#11,#12,#14,#18). Multiply the sum by 2.	0 – 42	<b>22</b>	≥ 26
	Depression Anxiety Stress - Total [SQ2.4]	Sum of SQ2.1, SQ2.2, and SQ2.3	0 – 126	<b>52</b>	≥ 60[MD]

Schippers, G. M., Broekman, T. G., & Buchholz, A. (2011). MATE 2.1. Manual and Protocol.  
English Edition: W. M. Cox.

MATE-en 2.1  
<http://www.mateinfo.eu>

## MATE Comparison group Cannabis

n ≈ 6063

Male 81%

Age (M, Sd, Range) 28 9 13-66

MATE-scores	Description		In the 25% who scored lowest	75% achieved this score or a higher one	50% achieved this score or a higher one	30% achieved this score or a higher one	20% achieved this score or a higher one	In the 10% who scored highest
	Interval		25	25	20	10	10	10
	Percentile		25	50	70	80	90	100
	Mean	Median	Low	Medium	Above the Mean	Well above the Mean	High	Very High
S2.1 Characteristics of physical comorbidity [0-4]	0.22	0	0				1	2-4
S2.2 In psychiatric or psychological treatment [0-2]	0.76	1	0	1		2		
S2.3 Characteristics of psychiatric comorbidity [0-5]	0.51	0	0		1		2	3-5
S4.1 Dependence [0-7]	4.76	5	0-4	5	6		7	
S4.2 Abuse [0-4]	2.13	2	0-1	2	3			4
S4.3 Severity dependence/abuse [0-9]	6.11	7	0-5	6-7	8		9	
S5.1 Physical complaints [0-40]	10.96	10	0-5	6-10	11-15	16-17	18-21	22-40
S6.1 Personality [0-8]	3.66	4	0-2	3-4	5		6	7-8
S7.1 Limitations - Total [0-76]	15.90	15	0-9	10-15	16-20	21-24	25-29	30-76
S7.2 Limitations - Basic [0-32]	4.69	4	0-2	3-4	5-6	7-8	9-10	11-32
S7.3 Limitations - Relational [0-20]	4.18	4	0-2	3-4	5-6	7	8-9	10-20
S7.4 Care & support [0-32]	4.10	3	0	1-3	4-5	6-8	9-11	12-32
S8.1 Positive external influence [0-12]	3.77	3	0-2	3	4-5	6	7	8-12
S8.2 Negative external influence [0-20]	3.56	3	0-1	2-3	4-5	6	7-8	9-20
S8.3 Need for care [0-20]	4.32	4	0-1	2-4	5-6	7	8-9	10-20
SQ1.1 Craving [0-20]	9.28	9	0-6	7-9	10-12	13-14	15-16	17-20
SQ2.1 Depression [0-42]	14.69	12	0-4	5-12	13-20	21-26	27-32	33-42
SQ2.2 Anxiety [0-42]	10.11	8	0-4	5-8	9-14	15-18	19-24	25-42
SQ2.3 Stress [0-42]	17.74	18	0-10	11-18	19-24	25-28	29-32	33-42
SQ2.4 Depression Anxiety Stress - Total [0-126]	42.53	40	0-20	21-40	41-56	57-67	68-82	83-126

page intentionally left blank

S2.1 Characteristics of physical comorbidity [0-4]	% Prevalence				
Physical (un)health	7%				
Intoxication/ withdrawal symptoms	8%				
Physical disease	6%				
Pregnancy	1%				
S2.2 In psychiatric or psychological treatment [0-2]	% Prevalence				
Medication prescribed for for psychological or psychiatric problems	<b>32%</b>				
Current or within the past year psychiatric or psychological treatment	44%				
S2.3 Characteristics of psychiatric comorbidity [0-5]	% Prevalence				
Suicide risk. Plan, attempt	5%				
Psychotic symptoms. Hallucinations	11%				
Psychotic symptoms. Delusions	19%				
Confusion	10%				
S7.3 Limitations - Relational [0-20]	o None	1 Mild	2 Moderate	3 Severe	4 Complete
d770 intimate relationships	50%	15%	<b>19%</b>	13%	3%
d7600 parent-child relationships	<b>83%</b>	6%	5%	5%	2%
d750,d760 informal social relationships and family relationships	<b>40%</b>	17%	23%	16%	4%
d740 formal relationships	<b>66%</b>	13%	12%	8%	1%
d710-d729 General interpersonal interactions	<b>57%</b>	15%	17%	9%	2%
S7.2 Limitations - Basic [0-32]	o None	1 Mild	2 Moderate	3 Severe	4 Complete
d610 Acquiring and maintaining a place to live	<b>81%</b>	6%	5%	5%	4%
d620-d640 Household tasks	<b>65%</b>	14%	13%	6%	2%
d510,d520,d540 Self-care	<b>84%</b>	8%	5%	1%	2%
d5700 Ensuring one's physical comfort	<b>95%</b>	3%	1%	0%	1%
d5701 Managing diet and fitness	<b>57%</b>	15%	18%	9%	1%
d5702a Seeking and following advices and treatment by healthcare	<b>68%</b>	14%	12%	5%	1%
d5702b Protecting oneself from health risks due to risky behaviour	<b>69%</b>	15%	11%	4%	1%
d230 Carrying out daily routine	39%	<b>17%</b>	22%	18%	4%
Beperking - overige items	o None	1 Mild	2 Moderate	3 Severe	4 Complete
d810-d859 Education, work, and employment	34%	13%	<b>20%</b>	22%	11%
d870 Economic self-sufficiency	46%	15%	<b>16%</b>	16%	7%
d920 Recreation and leisure	<b>41%</b>	14%	21%	19%	5%
d930 Religion and spirituality	<b>92%</b>	5%	2%	1%	0%
d240 Handling stress and other psychological demands	<b>18%</b>	14%	27%	31%	9%
d1 Learning and applying knowledge	<b>59%</b>	16%	16%	8%	1%

# MATE

Measurements in the Addictions for Triage and Evaluation

Version: MATE-en 2.1

**Scoring Form**

Assessed by: [—substance—] = heroin

Age: 50 Gender: ☒ ☐ ☐ ☐

Module	Score	Scoring and calculation	Range min-max	Result	Threshold value [MD]: used in the MATE dimension scores
2. Indicators for psychiatric or medical consultation	Characteristics of physical comorbidity [S2.1]	1 point for each Yes on physical health, intoxication, physical disease, pregnancy. Total.	0 – 4	<b>2</b>	
	Undergoing psychiatric or psychological treatment [S2.2]	1 point for medication for psych. problems, 1 point for recent psych. treatment. Total.	0 – 2	<b>1</b>	= 2[MD]
	Characteristics of psychiatric comorbidity [S2.3]	2 points for suicide plan/attempt, 1 point for each Yes on hallucinations, delusions, confusion. Total.	0 – 5	<b>1</b>	≥ 2[MD]
4. Substance dependence and abuse	Dependence [S4.1]	1 point for each Yes on the first 7 items (1-7). Total.	0 – 7	<b>6</b>	≥ 3
	Abuse [S4.2]	1 point for each Yes on the last 4 items (8 -11). Total.	0 – 4	<b>1</b>	≥ 1
	Severity of dependence/abuse [S4.3]	1 point for each Yes, except for Item 1 and Item 10 (they don't count). Total.	0 – 9	<b>6</b>	≥ 8[MD]
5. Physical complaints	Physical complaints [S5.1]	Sum of the 10 item values.	0 – 40	<b>5</b>	
6. Personality	Personality [S6.1]	1 point for a No answer on Item 3, 1 point for each Yes answer on the other items. Total.	0 – 8	<b>4</b>	≥ 4
7+8 MATE-ICN	Limitations - Total [S7.1]	Sum of the values of the 19 limitation items.	0 – 76	<b>19</b>	
	Limitations - Basic [S7.2]	Sum of the values of these 8 items: d610 Acquiring and maintaining a place to live; d620-d640 Household tasks; d510,520,540 Self-care; d5700 Ensuring one's physical comfort; d5701 Managing diet and fitness; d5702a Seeking and following advices and treatment by healthcare; d5702b Protecting oneself from health risks due to risky behaviour; d230 Carrying out daily routine	0 – 32	<b>4</b>	≥ 12[MD]
	Limitations - Relationships [S7.3]	Sum of the values of these 5 items: d770 Intimate relationships; d7600 Parent-child relationships; d750,d760 Informal social relationships and family relationships; d740 Formal relationships; d710-d720 General interpersonal interactions	0 – 20	<b>6</b>	
	Care and support [S7.4]	Sum of the values of the 8 Care and support items.	0 – 32	<b>8</b>	
	Positive external influences [S8.1]	Sum of the values of these 3 items: e310-e325+ Partner etc.; e550+ Legal factors; e598+ Other factors..	0 – 12	<b>4</b>	
	Negative external influences [S8.2]	Sum of the values of 5 items: e310-e325- Partner etc.; Loss of relationship; e460- Societal attitudes ; e550- Legal factors; e598- Other factors.	0 – 20	<b>5</b>	≥ 10[MD]
	Need for care [S8.3]	1 point for each Yes either from the assessor or from the person on the question about care needs (15 in Module 7 and 5 in Module 8). Total.	0 – 20	<b>13</b>	
	Q1. Craving	Craving [SQ1.1]	Sum of the 5 item values.	0 – 20	<b>18</b>
Q2. Depression, anxiety, and stress	Depression [SQ2.1]	Sum of the 7 item values (#3,#5,#10,#13,#16,#17,#21). Multiply the sum by 2.	0 – 42	<b>22</b>	≥ 21
	Anxiety [SQ2.2]	Sum of the 7 item values (#2,#4,#7,#9,#15,#19,#20). Multiply the sum by 2.	0 – 42	<b>18</b>	≥ 15
	Stress [SQ2.3]	Sum of the 7 item values (#1,#6,#8,#11,#12,#14,#18). Multiply the sum by 2.	0 – 42	<b>24</b>	≥ 26
	Depression Anxiety Stress - Total [SQ2.4]	Sum of SQ2.1, SQ2.2, and SQ2.3	0 – 126	<b>64</b>	≥ 60[MD]



## MATE Comparison group Opiates

n ≈ 1315

Male 81%

Age (M, Sd, Range) 42 10 18-75

MATE-scores	Description		In the 25% who scored lowest	75% achieved this score or a higher one	50% achieved this score or a higher one	30% achieved this score or a higher one	20% achieved this score or a higher one	In the 10% who scored highest
	Interval		25	25	20	10	10	10
	Percentile		25	50	70	80	90	100
	Mean	Median	Low	Medium	Above the Mean	Well above the Mean	High	Very High
S2.1 Characteristics of physical comorbidity [0-4]	0.55	0	0		1		2	3-4
S2.2 In psychiatric or psychological treatment [0-2]	0.67	0	0		1		2	
S2.3 Characteristics of psychiatric comorbidity [0-5]	0.44	0	0			1	2	3-5
S4.1 Dependence [0-7]	4.57	5	0-3	4-5	6	7		
S4.2 Abuse [0-4]	1.88	2	0-1	2	3		4	
S4.3 Severity dependence/abuse [0-9]	5.63	6	0-3	4-6	7-8		9	
S5.1 Physical complaints [0-40]	12.54	12	0-6	7-12	13-17	18-20	21-24	25-40
S6.1 Personality [0-8]	3.35	3	0-2	3	4	5	6	7-8
S7.1 Limitations - Total [0-76]	15.64	14	0-7	8-14	15-20	21-25	26-30	31-76
S7.2 Limitations - Basic [0-32]	5.24	4	0-1	2-4	5-7	8-9	10-12	13-32
S7.3 Limitations - Relational [0-20]	3.56	3	0-1	2-3	4-5	6	7-8	9-20
S7.4 Care & support [0-32]	4.93	4	0-1	2-4	5-6	7-8	9-12	13-32
S8.1 Positive external influence [0-12]	3.71	3	0-2	3	4-5	6	7	8-12
S8.2 Negative external influence [0-20]	3.73	3	0-1	2-3	4-5	6	7-8	9-20
S8.3 Need for care [0-20]	4.20	3	0-1	2-3	4-6	7-8	9-10	11-20
SQ1.1 Craving [0-20]	9.21	9	0-5	6-9	10-13	14-15	16-17	18-20
SQ2.1 Depression [0-42]	13.28	10	0-4	5-10	11-18	19-24	25-30	31-42
SQ2.2 Anxiety [0-42]	9.14	8	0-2	3-8	9-12	13-16	17-22	23-42
SQ2.3 Stress [0-42]	13.65	12	0-4	5-12	13-18	19-22	23-29	30-42
SQ2.4 Depression Anxiety Stress - Total [0-126]	36.03	32	0-14	15-32	33-48	49-60	61-76	77-126

page intentionally left blank

S2.1 Characteristics of physical comorbidity [0-4]	% Prevalence				
Physical (un)health	<b>19%</b>				
Intoxication/ withdrawal symptoms	<b>14%</b>				
Physical disease	20%				
Pregnancy	1%				
S2.2 In psychiatric or psychological treatment [0-2]	% Prevalence				
Medication prescribed for for psychological or psychiatric problems	<b>38%</b>				
Current or within the past year psychiatric or psychological treatment	29%				
S2.3 Characteristics of psychiatric comorbidity [0-5]	% Prevalence				
Suicide risk. Plan, attempt	5%				
Psychotic symptoms. Hallucinations	11%				
Psychotic symptoms. Delusions	14%				
Confusion	<b>10%</b>				
S7.3 Limitations - Relational [0-20]	o None	1 Mild	2 Moderate	3 Severe	4 Complete
d770 intimate relationships	58%	15%	<b>15%</b>	11%	2%
d7600 parent-child relationships	<b>75%</b>	7%	6%	7%	5%
d750,d760 informal social relationships and family relationships	56%	13%	<b>16%</b>	11%	4%
d740 formal relationships	70%	<b>12%</b>	11%	5%	2%
d710-d729 General interpersonal interactions	68%	<b>13%</b>	12%	6%	1%
S7.2 Limitations - Basic [0-32]	o None	1 Mild	2 Moderate	3 Severe	4 Complete
d610 Acquiring and maintaining a place to live	68%	<b>5%</b>	6%	8%	12%
d620-d640 Household tasks	<b>67%</b>	12%	12%	7%	2%
d510,d520,d540 Self-care	75%	<b>12%</b>	8%	3%	1%
d5700 Ensuring one's physical comfort	<b>90%</b>	4%	2%	2%	2%
d5701 Managing diet and fitness	<b>55%</b>	15%	18%	10%	2%
d5702a Seeking and following advices and treatment by healthcare	<b>66%</b>	13%	12%	6%	3%
d5702b Protecting oneself from health risks due to risky behaviour	79%	<b>11%</b>	6%	3%	1%
d230 Carrying out daily routine	49%	<b>14%</b>	19%	15%	4%
Beperking - overige items	o None	1 Mild	2 Moderate	3 Severe	4 Complete
d810-d859 Education, work, and employment	43%	10%	<b>16%</b>	17%	14%
d870 Economic self-sufficiency	38%	13%	<b>17%</b>	20%	12%
d920 Recreation and leisure	47%	<b>12%</b>	17%	16%	7%
d930 Religion and spirituality	<b>92%</b>	5%	2%	1%	0%
d240 Handling stress and other psychological demands	28%	14%	<b>26%</b>	25%	7%
d1 Learning and applying knowledge	63%	14%	<b>14%</b>	7%	1%

 <b>MATE</b>		<b>Measurements in the Addictions for Triage and Evaluation</b> <b>Version: MATE-en 2.1</b>		<b>Scoring Form</b>	
Assessed by: 		[—substance—] = <u>cocaine</u>		Age: <u>35</u>	Gender: <input checked="" type="checkbox"/>  <input type="checkbox"/> 
Module	Score	Scoring and calculation	Range min-max	Result	Threshold value [MD]: used in the MATE dimension scores
2. Indicators for psychiatric or medical consultation	Characteristics of physical comorbidity [S2.1]	1 point for each Yes on physical health, intoxication, physical disease, pregnancy. Total.	0 – 4	<b>0</b>	
	Undergoing psychiatric or psychological treatment [S2.2]	1 point for medication for psych. problems, 1 point for recent psych. treatment. Total.	0 – 2	<b>1</b>	= 2[MD]
	Characteristics of psychiatric comorbidity [S2.3]	2 points for suicide plan/attempt, 1 point for each Yes on hallucinations, delusions, confusion. Total.	0 – 5	<b>0</b>	≥ 2[MD]
4. Substance dependence and abuse	Dependence [S4.1]	1 point for each Yes on the first 7 items (1-7). Total.	0 – 7	<b>6</b>	≥ 3
	Abuse [S4.2]	1 point for each Yes on the last 4 items (8 -11). Total.	0 – 4	<b>3</b>	≥ 1
	Severity of dependence/abuse [S4.3]	1 point for each Yes, except for Item 1 and Item 10 (they don't count). Total.	0 – 9	<b>8</b>	≥ 8[MD]
5. Physical complaints	Physical complaints [S5.1]	Sum of the 10 item values.	0 – 40	<b>15</b>	
6. Personality	Personality [S6.1]	1 point for a No answer on Item 3, 1 point for each Yes answer on the other items. Total.	0 – 8	<b>4</b>	≥ 4
7+8 MATE-ICN	Limitations - Total [S7.1]	Sum of the values of the 19 limitation items.	0 – 76	<b>25</b>	
	Limitations - Basic [S7.2]	Sum of the values of these 8 items: d610 Acquiring and maintaining a place to live; d620-d640 Household tasks; d510,520,540 Self-care; d5700 Ensuring one's physical comfort; d5701 Managing diet and fitness; d5702a Seeking and following advices and treatment by healthcare; d5702b Protecting oneself from health risks due to risky behaviour; d230 Carrying out daily routine	0 – 32	<b>1</b>	≥ 12[MD]
	Limitations - Relationships [S7.3]	Sum of the values of these 5 items: d770 Intimate relationships; d7600 Parent-child relationships; d750,d760 Informal social relationships and family relationships; d740 Formal relationships; d710-d720 General interpersonal interactions	0 – 20	<b>11</b>	
	Care and support [S7.4]	Sum of the values of the 8 Care and support items.	0 – 32	<b>8</b>	
	Positive external influences [S8.1]	Sum of the values of these 3 items: e310-e325+ Partner etc.; e550+ Legal factors; e598+ Other factors..	0 – 12	<b>8</b>	
	Negative external influences [S8.2]	Sum of the values of 5 items: e310-e325- Partner etc.; Loss of relationship; e460- Societal attitudes ; e550- Legal factors; e598- Other factors.	0 – 20	<b>4</b>	≥ 10[MD]
	Need for care [S8.3]	1 point for each Yes either from the assessor or from the person on the question about care needs (15 in Module 7 and 5 in Module 8). Total.	0 – 20	<b>5</b>	
	Q1. Craving	Craving [SQ1.1]	Sum of the 5 item values.	0 – 20	<b>5</b>
Q2. Depression, anxiety, and stress	Depression [SQ2.1]	Sum of the 7 item values (#3,#5,#10,#13,#16,#17,#21). Multiply the sum by 2.	0 – 42	<b>16</b>	≥ 21
	Anxiety [SQ2.2]	Sum of the 7 item values (#2,#4,#7,#9,#15,#19,#20). Multiply the sum by 2.	0 – 42	<b>14</b>	≥ 15
	Stress [SQ2.3]	Sum of the 7 item values (#1,#6,#8,#11,#12,#14,#18). Multiply the sum by 2.	0 – 42	<b>26</b>	≥ 26
	Depression Anxiety Stress - Total [SQ2.4]	Sum of SQ2.1, SQ2.2, and SQ2.3	0 – 126	<b>56</b>	≥ 60[MD]

## MATE Comparison group Stimulants

n ≈ 4993

Male 84%

Age (M, Sd, Range) 33 9

15-69

MATE-scores	Description		In the 25% who scored lowest	75% achieved this score or a higher one	50% achieved this score or a higher one	30% achieved this score or a higher one	20% achieved this score or a higher one	In the 10% who scored highest
	Interval		25	25	20	10	10	10
	Percentile		25	50	70	80	90	100
	Mean	Median	Low	Medium	Above the Mean	Well above the Mean	High	Very High
S2.1 Characteristics of physical comorbidity [0-4]	0.28	0	0			1		2-4
S2.2 In psychiatric or psychological treatment [0-2]	0.69	0	0		1	2		
S2.3 Characteristics of psychiatric comorbidity [0-5]	0.63	0	0		1		2	3-5
S4.1 Dependence [0-7]	4.73	5	0-4	5	6	7		
S4.2 Abuse [0-4]	2.33	2	0-2		3		4	
S4.3 Severity dependence/abuse [0-9]	6.16	7	0-5	6-7	8		9	
S5.1 Physical complaints [0-40]	10.65	9	0-5	6-9	10-14	15-17	18-21	22-40
S6.1 Personality [0-8]	3.56	3	0-2	3	4	5	6	7-8
S7.1 Limitations - Total [0-76]	16.32	15	0-8	9-15	16-21	22-25	26-31	32-76
S7.2 Limitations - Basic [0-32]	4.96	4	0-1	2-4	5-7	8	9-11	12-32
S7.3 Limitations - Relational [0-20]	4.35	4	0-2	3-4	5-6	7	8-9	10-20
S7.4 Care & support [0-32]	4.13	3	0	1-3	4-5	6-8	9-11	12-32
S8.1 Positive external influence [0-12]	3.96	3	0-3		4-5	6	7	8-12
S8.2 Negative external influence [0-20]	3.88	3	0-2	3	4-5	6	7-8	9-20
S8.3 Need for care [0-20]	4.76	4	0-2	3-4	5-6	7-8	9-10	11-20
SQ1.1 Craving [0-20]	7.68	7	0-4	5-7	8-10	11-12	13-14	15-20
SQ2.1 Depression [0-42]	14.00	12	0-4	5-12	13-20	21-26	27-32	33-42
SQ2.2 Anxiety [0-42]	9.63	8	0-2	3-8	9-12	13-18	19-23	24-42
SQ2.3 Stress [0-42]	16.65	16	0-8	9-16	17-22	23-26	27-32	33-42
SQ2.4 Depression Anxiety Stress - Total [0-126]	40.28	36	0-16	17-36	37-54	55-66	67-82	83-126

page intentionally left blank

S2.1 Characteristics of physical comorbidity [0-4]	% Prevalence				
Physical (un)health	10%				
Intoxication/ withdrawal symptoms	9%				
Physical disease	8%				
Pregnancy	1%				
S2.2 In psychiatric or psychological treatment [0-2]	% Prevalence				
Medication prescribed for for psychological or psychiatric problems	<b>33%</b>				
Current or within the past year psychiatric or psychological treatment	36%				
S2.3 Characteristics of psychiatric comorbidity [0-5]	% Prevalence				
Suicide risk. Plan, attempt	7%				
Psychotic symptoms. Hallucinations	17%				
Psychotic symptoms. Delusions	22%				
Confusion	11%				
S7.3 Limitations - Relational [0-20]	o None	1 Mild	2 Moderate	3 Severe	4 Complete
d770 intimate relationships	<b>43%</b>	14%	21%	18%	4%
d7600 parent-child relationships	76%	6%	6%	8%	<b>4%</b>
d750,d760 informal social relationships and family relationships	44%	15%	22%	<b>16%</b>	4%
d740 formal relationships	68%	12%	12%	7%	<b>1%</b>
d710-d729 General interpersonal interactions	<b>66%</b>	13%	14%	7%	1%
S7.2 Limitations - Basic [0-32]	o None	1 Mild	2 Moderate	3 Severe	4 Complete
d610 Acquiring and maintaining a place to live	<b>70%</b>	6%	6%	8%	9%
d620-d640 Household tasks	<b>68%</b>	13%	11%	6%	2%
d510,d520,d540 Self-care	<b>84%</b>	8%	5%	2%	0%
d5700 Ensuring one's physical comfort	<b>92%</b>	4%	2%	1%	1%
d5701 Managing diet and fitness	<b>64%</b>	13%	15%	7%	1%
d5702a Seeking and following advices and treatment by healthcare	<b>66%</b>	14%	12%	6%	3%
d5702b Protecting oneself from health risks due to risky behaviour	<b>68%</b>	13%	11%	6%	1%
d230 Carrying out daily routine	45%	<b>13%</b>	20%	17%	4%
Beperking - overige items	o None	1 Mild	2 Moderate	3 Severe	4 Complete
d810-d859 Education, work, and employment	41%	11%	16%	<b>19%</b>	13%
d870 Economic self-sufficiency	42%	13%	17%	19%	<b>10%</b>
d920 Recreation and leisure	44%	13%	19%	19%	<b>5%</b>
d930 Religion and spirituality	<b>92%</b>	5%	2%	1%	0%
d240 Handling stress and other psychological demands	22%	12%	<b>28%</b>	30%	8%
d1 Learning and applying knowledge	<b>60%</b>	15%	15%	8%	1%

MATE		Measurements in the Addictions for Triage and Evaluation Version: MATE-en 2.1		Scoring Form	
Assessed by: 		[—substance—] = <u>gambling</u>		Age: <u>32</u>	Gender: <input checked="" type="checkbox"/>  <input type="checkbox"/> 
Module	Score	Scoring and calculation	Range min-max	Result	Threshold value [MD]: used in the MATE dimension scores
2. Indicators for psychiatric or medical consultation	Characteristics of physical comorbidity [S2.1]	1 point for each Yes on physical health, intoxication, physical disease, pregnancy. Total.	0 – 4	<b>0</b>	
	Undergoing psychiatric or psychological treatment [S2.2]	1 point for medication for psych. problems, 1 point for recent psych. treatment. Total.	0 – 2	<b>0</b>	= 2[MD]
	Characteristics of psychiatric comorbidity [S2.3]	2 points for suicide plan/attempt, 1 point for each Yes on hallucinations, delusions, confusion. Total.	0 – 5	<b>1</b>	≥ 2[MD]
4. Substance dependence and abuse	Dependence [S4.1]	1 point for each Yes on the first 7 items (1-7). Total.	0 – 7	<b>5</b>	≥ 3
	Abuse [S4.2]	1 point for each Yes on the last 4 items (8 -11). Total.	0 – 4	<b>2</b>	≥ 1
	Severity of dependence/abuse [S4.3]	1 point for each Yes, except for Item 1 and Item 10 (they don't count). Total.	0 – 9	<b>6</b>	≥ 8[MD]
5. Physical complaints	Physical complaints [S5.1]	Sum of the 10 item values.	0 – 40	<b>9</b>	
6. Personality	Personality [S6.1]	1 point for a No answer on Item 3, 1 point for each Yes answer on the other items. Total.	0 – 8	<b>3</b>	≥ 4
7+8 MATE-ICN	Limitations - Total [S7.1]	Sum of the values of the 19 limitation items.	0 – 76	<b>13</b>	
	Limitations - Basic [S7.2]	Sum of the values of these 8 items: d610 Acquiring and maintaining a place to live; d620-d640 Household tasks; d510,520,540 Self-care; d5700 Ensuring one's physical comfort; d5701 Managing diet and fitness; d5702a Seeking and following advices and treatment by healthcare; d5702b Protecting oneself from health risks due to risky behaviour; d230 Carrying out daily routine	0 – 32	<b>0</b>	≥ 12[MD]
	Limitations - Relationships [S7.3]	Sum of the values of these 5 items: d770 Intimate relationships; d7600 Parent-child relationships; d750,d760 Informal social relationships and family relationships; d740 Formal relationships; d710-d720 General interpersonal interactions	0 – 20	<b>7</b>	
	Care and support [S7.4]	Sum of the values of the 8 Care and support items.	0 – 32	<b>4</b>	
	Positive external influences [S8.1]	Sum of the values of these 3 items: e310-e325+ Partner etc.; e550+ Legal factors; e598+ Other factors..	0 – 12	<b>6</b>	
	Negative external influences [S8.2]	Sum of the values of 5 items: e310-e325- Partner etc.; Loss of relationship; e460- Societal attitudes ; e550- Legal factors; e598- Other factors.	0 – 20	<b>5</b>	≥ 10[MD]
	Need for care [S8.3]	1 point for each Yes either from the assessor or from the person on the question about care needs (15 in Module 7 and 5 in Module 8). Total.	0 – 20	<b>7</b>	
	Q1. Craving	Craving [SQ1.1]	Sum of the 5 item values.	0 – 20	<b>5</b>
Q2. Depression, anxiety, and stress	Depression [SQ2.1]	Sum of the 7 item values (#3,#5,#10,#13,#16,#17,#21). Multiply the sum by 2.	0 – 42	<b>20</b>	≥ 21
	Anxiety [SQ2.2]	Sum of the 7 item values (#2,#4,#7,#9,#15,#19,#20). Multiply the sum by 2.	0 – 42	<b>2</b>	≥ 15
	Stress [SQ2.3]	Sum of the 7 item values (#1,#6,#8,#11,#12,#14,#18). Multiply the sum by 2.	0 – 42	<b>18</b>	≥ 26
	Depression Anxiety Stress - Total [SQ2.4]	Sum of SQ2.1, SQ2.2, and SQ2.3	0 – 126	<b>40</b>	≥ 60[MD]



## MATE Comparison group Gambling

n ≈ 1547

Male 89%

Age (M, Sd, Range) 37 12 16-80

MATE-scores	Description		In the 25% who scored lowest	75% achieved this score or a higher one	50% achieved this score or a higher one	30% achieved this score or a higher one	20% achieved this score or a higher one	In the 10% who scored highest
	Interval		25	25	20	10	10	10
	Percentile		25	50	70	80	90	100
	Mean	Median	Low	Medium	Above the Mean	Well above the Mean	High	Very High
S2.1 Characteristics of physical comorbidity [0-4]	0.18	0	0				1	2-4
S2.2 In psychiatric or psychological treatment [0-2]	0.45	0	0		1		2	
S2.3 Characteristics of psychiatric comorbidity [0-5]	0.28	0	0				1	2-5
S4.1 Dependence [0-7]								
S4.2 Abuse [0-4]								
S4.3 Severity dependence/abuse [0-9]								
S5.1 Physical complaints [0-40]	8.08	6	0-2	3-6	7-11	12-14	15-19	20-40
S6.1 Personality [0-8]	2.89	3	0-2	3	4		5-6	7-8
S7.1 Limitations - Total [0-76]	11.87	10	0-5	6-10	11-15	16-18	19-24	25-76
S7.2 Limitations - Basic [0-32]	2.79	2	0	1-2	3-4	5	6-8	9-32
S7.3 Limitations - Relational [0-20]	3.41	3	0-1	2-3	4-5	6	7-8	9-20
S7.4 Care & support [0-32]	2.72	1	0	1	2-4	5	6-8	9-32
S8.1 Positive external influence [0-12]	3.61	3	0-2	3	4	5-6		7-12
S8.2 Negative external influence [0-20]	2.37	2	0	1-2	3	4	5-6	7-20
S8.3 Need for care [0-20]	3.16	2	0-1	2	3-4	5	6-8	9-20
SQ1.1 Craving [0-20]	6.81	6	0-3	4-6	7-9	10	11-14	15-20
SQ2.1 Depression [0-42]	12.56	10	0-2	3-10	11-18	19-22	23-30	31-42
SQ2.2 Anxiety [0-42]	6.65	4	0	1-4	5-8	9-12	13-18	19-42
SQ2.3 Stress [0-42]	13.06	12	0-4	5-12	13-18	19-22	23-28	29-42
SQ2.4 Depression Anxiety Stress - Total [0-126]	32.24	26	0-10	11-26	27-42	43-54	55-70	71-126

page intentionally left blank

S2.1 Characteristics of physical comorbidity [0-4]	% Prevalence				
Physical (un)health	3%				
Intoxication/ withdrawal symptoms	3%				
Physical disease	11%				
Pregnancy	0%				
S2.2 In psychiatric or psychological treatment [0-2]	% Prevalence				
Medication prescribed for for psychological or psychiatric problems	20%				
Current or within the past year psychiatric or psychological treatment	25%				
S2.3 Characteristics of psychiatric comorbidity [0-5]	% Prevalence				
Suicide risk. Plan, attempt	5%				
Psychotic symptoms. Hallucinations	4%				
Psychotic symptoms. Delusions	9%				
Confusion	6%				
S7.3 Limitations - Relational [0-20]	o None	1 Mild	2 Moderate	3 Severe	4 Complete
d770 intimate relationships	42%	17%	20%	18%	4%
d7600 parent-child relationships	81%	7%	6%	4%	1%
d750,d760 informal social relationships and family relationships	55%	14%	19%	11%	2%
d740 formal relationships	81%	8%	7%	4%	1%
d710-d729 General interpersonal interactions	72%	12%	10%	5%	1%
S7.2 Limitations - Basic [0-32]	o None	1 Mild	2 Moderate	3 Severe	4 Complete
d610 Acquiring and maintaining a place to live	82%	6%	5%	5%	2%
d620-d640 Household tasks	75%	11%	9%	4%	1%
d510,d520,d540 Self-care	91%	5%	3%	1%	1%
d5700 Ensuring one's physical comfort	98%	2%	0%	0%	0%
d5701 Managing diet and fitness	74%	11%	11%	3%	1%
d5702a Seeking and following advices and treatment by healthcare	77%	11%	9%	3%	0%
d5702b Protecting oneself from health risks due to risky behaviour	92%	4%	3%	1%	0%
d230 Carrying out daily routine	60%	12%	16%	9%	2%
Beperking - overige items	o None	1 Mild	2 Moderate	3 Severe	4 Complete
d810-d859 Education, work, and employment	57%	9%	12%	14%	7%
d870 Economic self-sufficiency	41%	12%	17%	20%	10%
d920 Recreation and leisure	48%	14%	20%	15%	3%
d930 Religion and spirituality	92%	4%	2%	1%	0%
d240 Handling stress and other psychological demands	35%	15%	24%	21%	4%
d1 Learning and applying knowledge	73%	11%	10%	4%	1%

page intentionally left blank





